

## SAA1 Polyclonal Antibody

(Catalog # A52372)

### Background

Major acute phase reactant. Apolipoprotein of the HDL complex.

### Description

SAA1 Polyclonal Antibody. Unconjugated. Raised in: Rabbit.

### Formulation

Liquid. 0.03% Proclin 300, 50% Glycerol, 0.01M PBS, PH 7.4.

### Specificity

Human

### Isotype

IgG

### Uniprot ID

P0DJ18

### Purification

>95%, Protein G purified

### Immunogen

Recombinant Human Serum amyloid A-1 protein (20-122AA)

### Storage

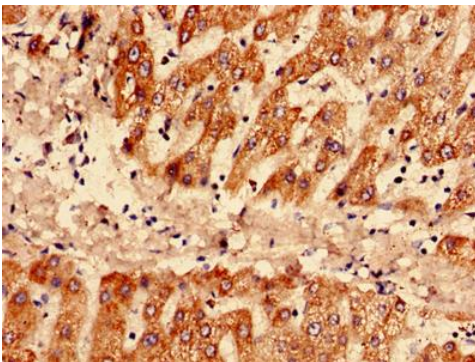
Shipped at 4°C. Upon delivery aliquot and store at -20°C (short-term) or -80°C (long-term). Avoid repeated freeze.

### Alternative Names

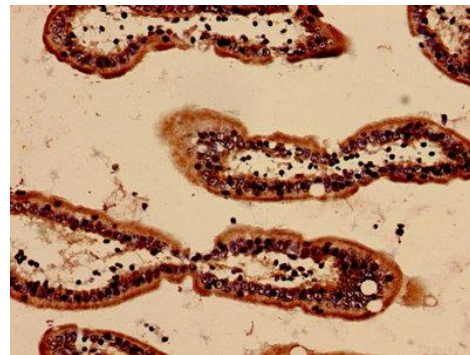
Amyloid fibril protein AA, SAA1

### Application

ELISA, IHC; Recommended dilution: IHC:1:20-1:200



Immunohistochemistry analysis of human liver tissue using SAA1 Polyclonal Antibody at dilution of 1:100



Immunohistochemistry analysis of human small intestine tissue using SAA1 Polyclonal Antibody at dilution of 1:100