

PYGB Polyclonal Antibody

(Catalog # A51994)

Background

Phosphorylase is an important allosteric enzyme in carbohydrate metabolism. Enzymes from different sources differ in their regulatory mechanisms and in their natural substrates. However, all known phosphorylases share catalytic and structural properties.

Description

PYGB Polyclonal Antibody. Unconjugated. Raised in: Rabbit.

Formulation

Liquid. 0.03% Proclin 300, 50% Glycerol, 0.01M PBS, PH 7.4.

Specificity

Human, Mouse

Isotype

IgG

Uniprot ID

P11216

Purification

>95%, Protein G purified

Immunogen

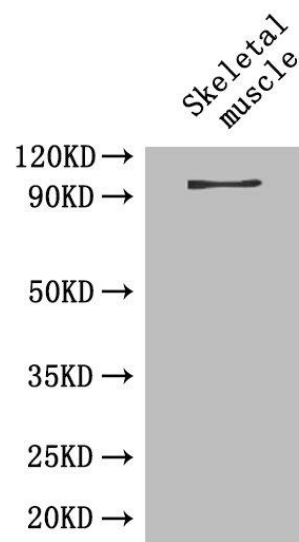
Recombinant Human Glycogen phosphorylase, brain form protein (6-843AA)

Storage

Shipped at 4°C. Upon delivery aliquot and store at -20°C (short-term) or -80°C (long-term). Avoid repeated freeze.

Application

ELISA, WB, IHC; Recommended dilution: WB:1:500-1:5000, IHC:1:20-1:200



Western Blot

Positive WB detected in: mouse skeletal muscle

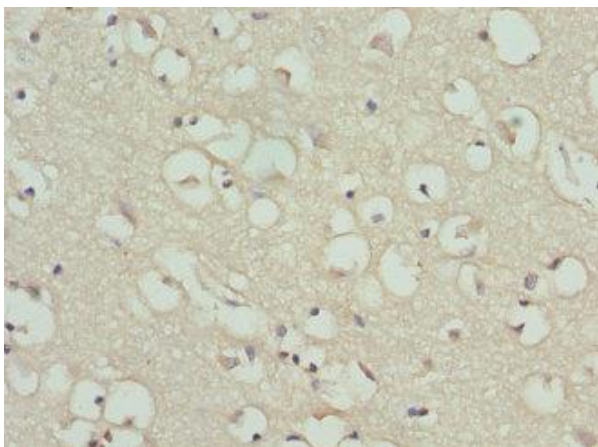
All lanes: PYGB Polyclonal Antibody at 4ug/ml

Secondary

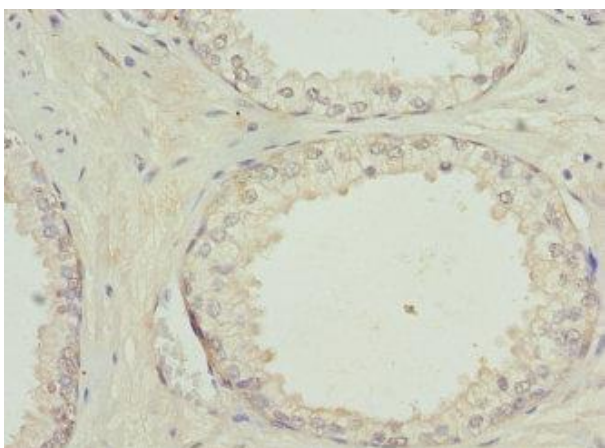
Goat polyclonal to rabbit IgG at 1/50000 dilution

Predicted band size: 96 kDa

Observed band size: 96 kDa



Immunohistochemistry of paraffin-embedded human brain tissue at dilution 1:100



Immunohistochemistry of paraffin-embedded human prostate cancer at dilution 1:100