

WFDC2 Polyclonal Antibody

(Catalog #A51925)

Description

WFDC2 Polyclonal Antibody. Unconjugated. Raised in: Rabbit.

Formulation

0.03% Proclin 300, 50% Glycerol, 0.01M PBS, PH 7.4

Specificity

Human, Mouse

Isotype

IgG

Uniprot ID

Q14508

Purification

Protein G purified

Immunogen

Recombinant Human WAP four-disulfide core domain protein 2 protein (31-124AA)

Storage

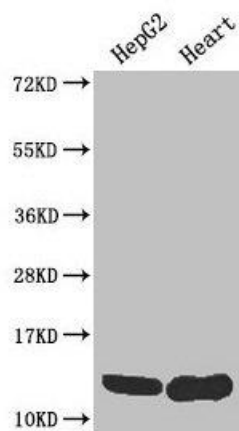
Shipped at 4°C. Upon delivery aliquot and store at -20°C (short-term) or -80°C (long-term). Avoid repeated freeze.

Alternative Names

WAP four-disulfide core domain protein 2

Application

ELISA, WB, IHC, IF; Recommended dilution: WB 1:500-1:2000, IHC 1:200-1:500, IF 1:50-1:200



Western Blot

Positive WB detected in: HepG2 whole cell lysate,
Mouse heart tissue

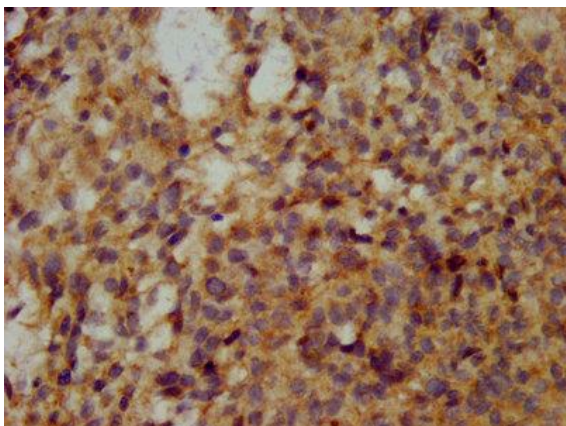
All lanes: WFDC2 antibody at 4ug/ml

Secondary

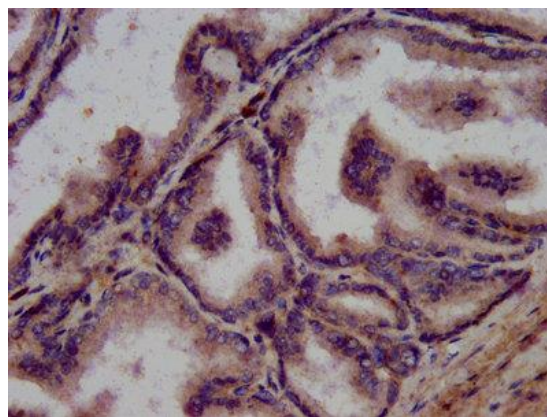
Goat polyclonal to rabbit IgG at 1/50000 dilution

Predicted band size: 13, 9, 12 kDa

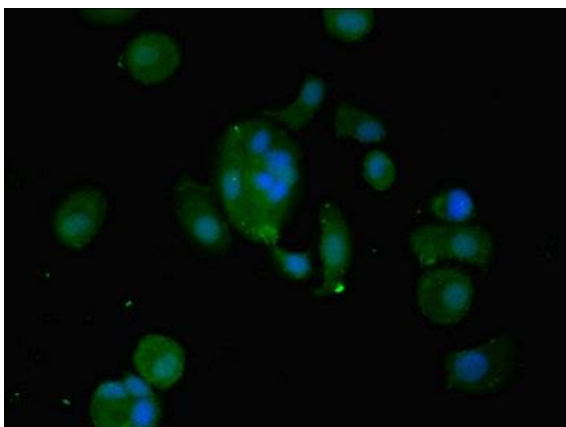
Observed band size: 13 kDa



IHC image of WFDC2 Antibody diluted at 1:200 and staining in paraffin-embedded human ovarian cancer performed on a Leica Bond™ system. After dewaxing and hydration, antigen retrieval was mediated by high pressure in a citrate buffer (pH 6.0). Section was blocked with 10% normal goat serum 30min at RT. Then primary antibody (1% BSA) was incubated at 4°C overnight. The primary is detected by a biotinylated secondary antibody and visualized using an HRP conjugated SP system.



IHC image of WFDC2 Antibody diluted at 1:200 and staining in paraffin-embedded human prostate tissue performed on a Leica Bond™ system. After dewaxing and hydration, antigen retrieval was mediated by high pressure in a citrate buffer (pH 6.0). Section was blocked with 10% normal goat serum 30min at RT. Then primary antibody (1% BSA) was incubated at 4°C overnight. The primary is detected by a biotinylated secondary antibody and visualized using an HRP conjugated SP system.



Immunofluorescent analysis of MCF-7 cells using WFDC2 Antibody at dilution of 1:100 and Alexa Fluor 488-conjugated AffiniPure Goat Anti-Rabbit IgG (H+L)