

## MP68 Polyclonal Antibody

(Catalog A51636)

### Background

Belongs to the small mitochondrial proteolipid family.

### Description

MP68 Polyclonal Antibody. Unconjugated. Raised in: Rabbit.

### Formulation

0.03% Proclin 300. 50% Glycerol, 0.01M PBS, pH 7.4.

### Specificity

Human

### Isotype

IgG

### Uniprot ID

P56378

### Purification

Protein G purified

### Immunogen

Recombinant Human 68 kDa mitochondrial proteolipid protein (1-58AA)

### Storage

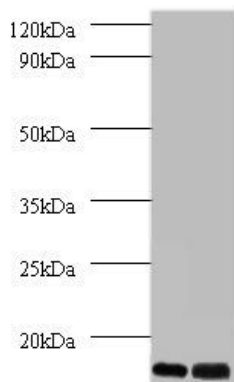
Shipped at 4°C. Upon delivery aliquot and store at -20°C (short-term) or -80°C (long-term). Avoid repeated freeze.

### Alternative Names

PRO1574, C14orf2, MP68

### Application

ELISA, WB; Recommended dilution: WB:1:500-1:2000



All lanes: MP68 Polyclonal Antibody at 2ug/ml  
Lane 1: EC109 whole cell lysate  
Lane 2: 293T whole cell lysate  
Secondary  
Goat polyclonal to Rabbit IgG at 1/15000 dilution  
Predicted band size: 7, 9 kDa  
Observed band size: 6.4 kDa