
SDHA Polyclonal Antibody

(Catalog # A51569)

Background

Flavoprotein (FP) subunit of succinate dehydrogenase (SDH) that is involved in complex II of the mitochondrial electron transport chain and is responsible for transferring electrons from succinate to ubiquinone (coenzyme Q).

Description

SDHA Polyclonal Antibody. Unconjugated. Raised in: Rabbit.

Formulation

Liquid. 0.03% Proclin 300, 50% Glycerol, 0.01M PBS, PH 7.4.

Specificity

Human

Isotype

IgG

Uniprot ID

P31040

Purification

>95%, Protein G purified

Immunogen

Recombinant Human Succinate dehydrogenase [ubiquinone] flavoprotein subunit, mitochondrial protein (44-293AA)

Storage

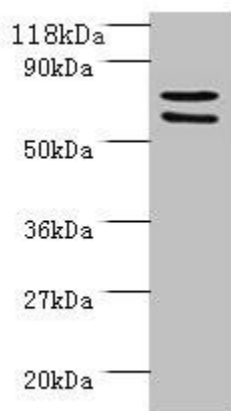
Shipped at 4°C. Upon delivery aliquot and store at -20°C (short-term) or -80°C (long-term). Avoid repeated freeze.

Alternative Names

SDH2, SDHF, SDHA, Flavoprotein subunit of complex II Fp

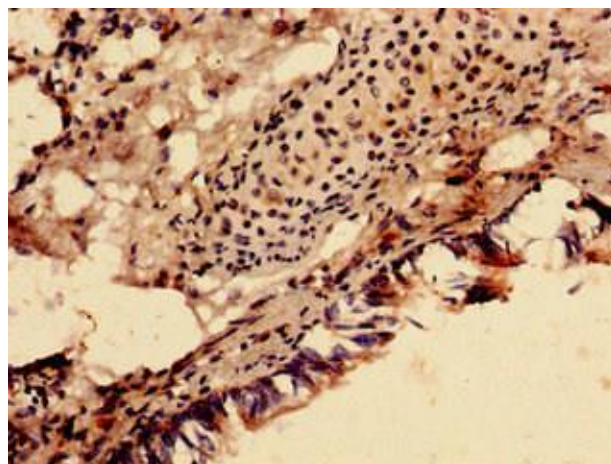
Application

ELISA, WB, IHC, IF; Recommended dilution: WB:1:500-1:5000, IHC:1:20-1:200, IF:1:50-1:200

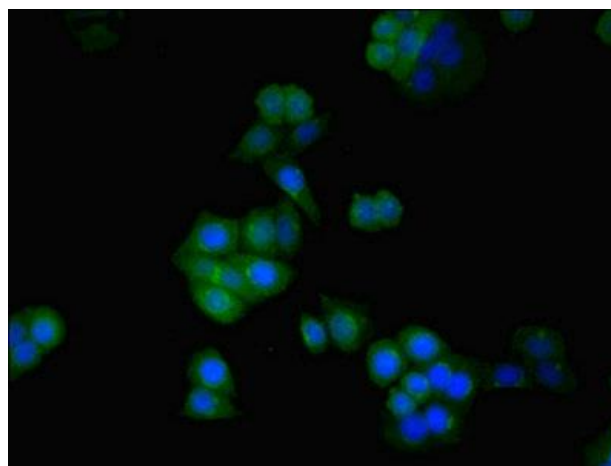


Western blot

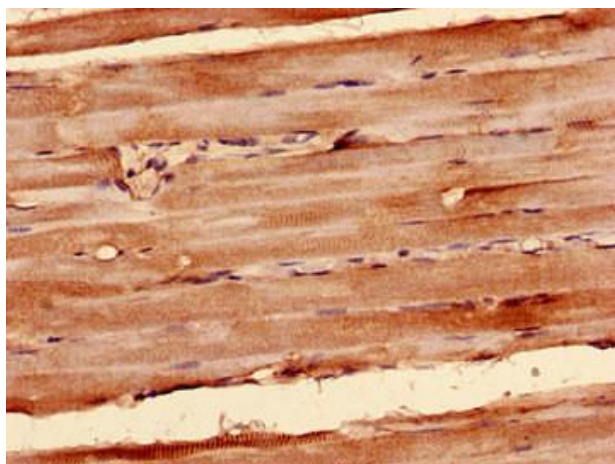
All lanes: SDHA Polyclonal Antibody at 2ug/ml+293T whole cell lysate
at 20 ug
Secondary
Goat polyclonal to Rabbit IgG at 1/15000 dilution
Predicted band size: 73, 68, 57 kDa
Observed band size: 73 kDa, 60 kDa



Immunocytochemistry analysis of human lung tissue using SDHA Polyclonal Antibody at dilution of 1:100



Immunofluorescent analysis of PC3 cells using SDHA Polyclonal Antibody at a dilution of 1:100 and Alexa Fluor 488-conjugated AffiniPure Goat Anti-Rabbit IgG (H+L)



Immunocytochemistry analysis of human skeletal muscle tissue using SDHA Polyclonal Antibody at dilution of 1:100