

FAM60A Polyclonal Antibody

(Catalog # A51357)

Background

Subunit of the Sin3 deacetylase complex (Sin3/HDAC), this subunit is important for the repression of genes encoding components of the TGF-beta signaling pathway.

Description

FAM60A Polyclonal Antibody. Unconjugated. Raised in: Rabbit.

Formulation

Liquid. 0.03% Proclin 300, 50% Glycerol, 0.01M PBS, PH 7.4.

Specificity

Human

Isotype

IgG

Uniprot ID

Q9NP50

Purification

>95%, Protein G purified

Immunogen

Recombinant Human Protein FAM60A protein (1-221AA)

Storage

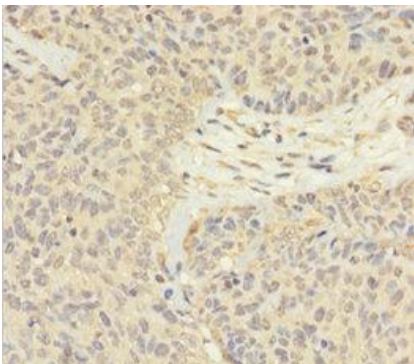
Shipped at 4°C. Upon delivery aliquot and store at -20°C (short-term) or -80°C (long-term). Avoid repeated freeze.

Alternative Names

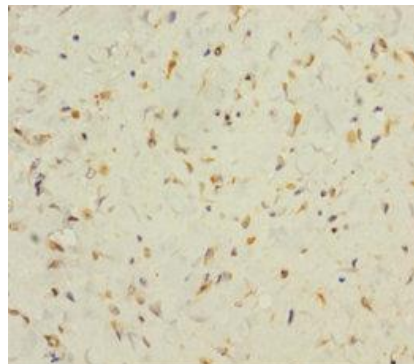
Tera protein homolog, C12orf14, L4, FAM60A

Application

ELISA, IHC; Recommended dilution: IHC:1:20-1:200



Immunohistochemistry of paraffin-embedded human ovarian cancer using FAM60A Polyclonal Antibody at dilution 1:100.



Immunohistochemistry of paraffin-embedded human colon cancer using FAM60A Polyclonal Antibody at dilution 1:100.