

LY6E Polyclonal Antibody

(Catalog # A50917)

Background

Involved in T-cell development. Believed to act as a modulator of nicotinic acetylcholine receptors (nAChRs) activity. In vitro inhibits alpha-3:beta-4-containing nAChRs maximum response.

Description

LY6E Polyclonal Antibody. Unconjugated. Raised in: Rabbit.

Formulation

Liquid. 0.03% Proclin 300, 50% Glycerol, 0.01M PBS, PH 7.4.

Specificity

Human

Isotype

IgG

Uniprot ID

Q16553

Purification

>95%, Protein G purified

Immunogen

Recombinant Human Lymphocyte antigen 6E protein (21-101AA)

Storage

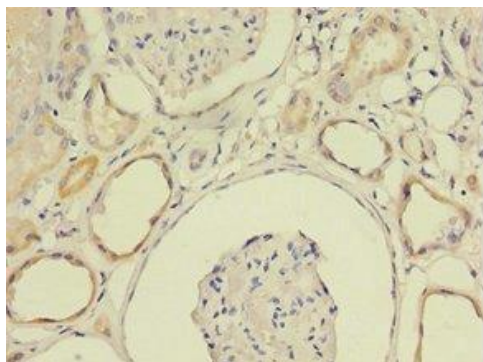
Shipped at 4°C. Upon delivery aliquot and store at -20°C (short-term) or -80°C (long-term). Avoid repeated freeze.

Alternative Names

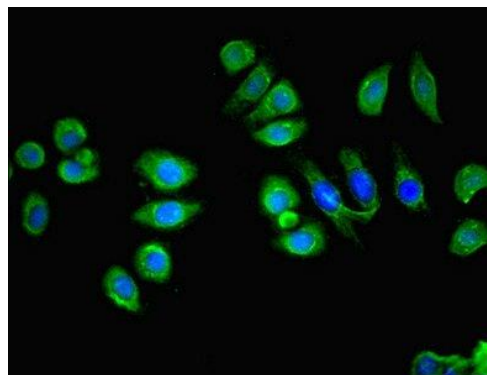
Lymphocyte antigen 6E, Ly-6E, Retinoic acid-induced gene E protein, RIG-E, Stem cell antigen 2, SCA-2, Thymic shared antigen 1, TSA-1, LY6E

Application

ELISA, IHC, IF; Recommended dilution: IHC:1:20-1:200, IF:1:50-1:200



Immunohistochemistry of paraffin-embedded human kidney tissue using LY6E Polyclonal Antibody at dilution 1:100



Immunofluorescent analysis of A549 cells using LY6E Polyclonal Antibody at a dilution of 1:100 and Alexa Fluor 488-conjugated AffiniPure Goat Anti-Rabbit IgG (H+L)