

ANGPTL7 Polyclonal Antibody

(Catalog # A50033)

Description

ANGPTL7 Polyclonal Antibody. Unconjugated. Raised in: Rabbit.

Formulation

0.03% Proclin 300, 50% Glycerol, 0.01M PBS, PH 7.4

Specificity

Human

Isotype

IgG

Uniprot ID

O43827

Purification

Protein G purified

Immunogen

Recombinant Human Angiotensin-related protein 7 protein (27-296AA)

Storage

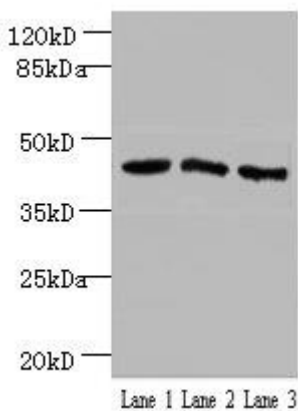
Shipped at 4°C. Upon delivery aliquot and store at -20°C (short-term) or -80°C (long-term). Avoid repeated freeze.

Alternative Names

Angiotensin-related protein 7, Angiotensin-like factor, Angiotensin-like protein 7, Cornea-derived transcript 6 protein, ANGPTL7, CDT6

Application

ELISA, WB, IHC; Recommended dilution: WB:1:500-1:5000, IHC:1:20-1:200



Western blot

All lanes: ANGPTL7 Polyclonal Antibody at 2ug/ml

Lane 1: MCF-7 cells

Lane 2: COLO320 cells

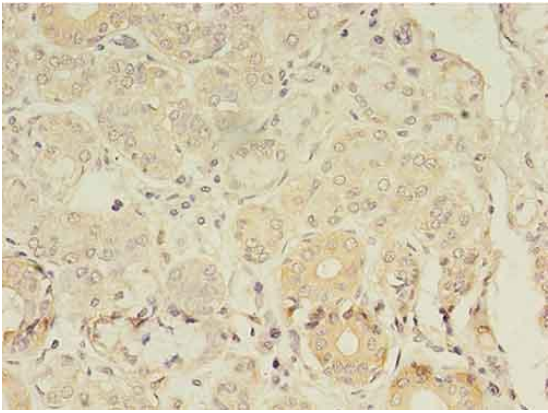
Lane 3: HepG2 cells

Secondary

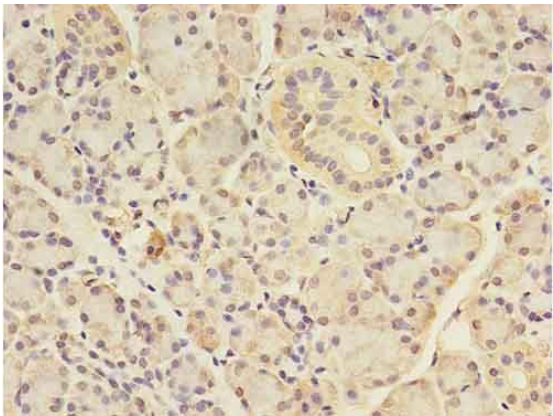
Goat polyclonal to rabbit at 1/10000 dilution

Predicted band size: 40kDa

Observed band size: 40kDa



Immunohistochemistry of paraffin-embedded human salivary gland tissue at dilution 1:100



Immunohistochemistry of paraffin-embedded human pancreatic tissue at dilution 1:100