

---

## Histone H4K20me2 (H4K20 Dimethyl) Polyclonal Antibody

(Catalog # A-4047)

---

### Background

Histones are basic nuclear proteins that are responsible for the nucleosome structure of the chromosomal fiber in eukaryotes. This structure consists of approximately 146 bp of DNA wrapped around a nucleosome, an octamer composed of pairs of each of the four core histones (H2A, H2B, H3, and H4). The chromatin fiber is further compacted through the interaction of a linker histone, H1, with the DNA between the nucleosomes to form higher order chromatin structures. This gene is intronless and encodes a member of the histone H4 family. Transcripts from this gene lack polyA tails; instead, they contain a palindromic termination element. This gene is found in a histone cluster on chromosome 1. This gene is one of four histone genes in the cluster that are duplicated; this record represents the centromeric copy.

### Description

Histone H4K20me2 (H4K20 Dimethyl) Polyclonal Antibody. Unconjugated. Raised in: Rabbit.

### Formulation:

PBS with 0.02% sodium azide, 50% glycerol, pH7.3.

### Specificity

Broad Range, Mouse, Rat, Human

### Isotype

IgG

### Uniprot ID

P62805

### Purification

Affinity Purified

### Immunogen

A synthetic dimethylated peptide around K20 of human histone H4 (NP\_003529.1).

### Storage

Shipped at 4°C. Store at -20°C. Avoid multiple freeze/thaw cycles.

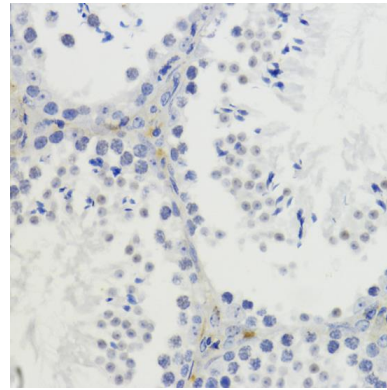
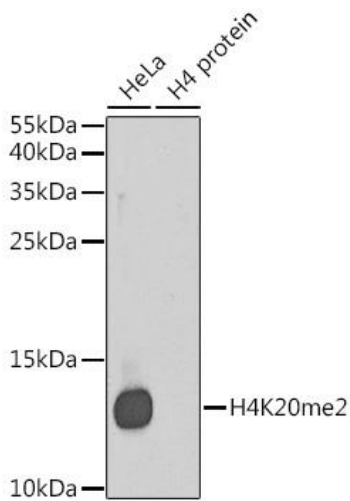
### Alternative Names

H4K20me2 antibody; H4K20m2 antibody; H4; H4/n; H4F2; H4FN; FO108; HIST2H4; H4K20me1 antibody; H4K20m1 antibody

### Application

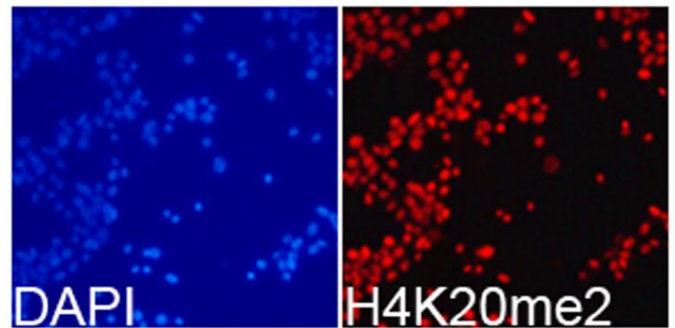
WB, IHC, IF, IP, ChIP, ChIPseq; Recommended dilution: WB 1:500 - 1:2000 IHC 1:50 - 1:200 IF 1:50 - 1:200 IP 1:50 - 1:200 ChIP 1:20 - 1:100 CHIPseq 1:20 - 1:100

---

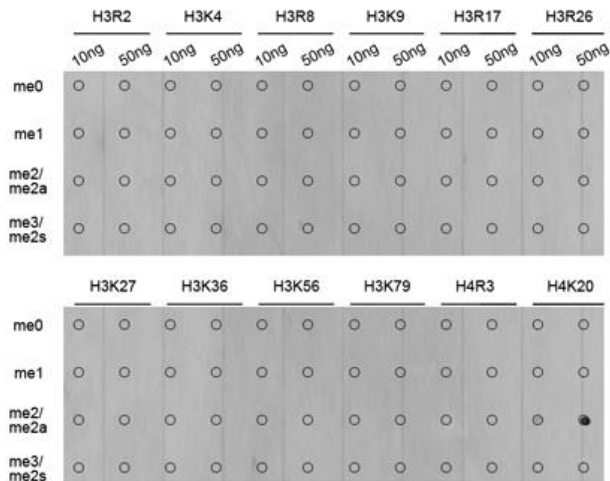


Immunohistochemistry of paraffin-embedded mouse testis using DiMethyl-Histone H4-K20 antibody at dilution of 1:200 (40x lens).

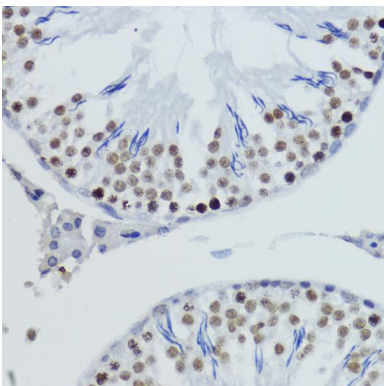
Western blot analysis of extracts of various cell lines, using DiMethyl-Histone H4-K20 antibody.  
 Secondary antibody: HRP Goat Anti-Rabbit IgG (H+L) at 1:10000 dilution.  
 Lysates/proteins: 25ug per lane.  
 Blocking buffer: 3% nonfat dry milk in TBST.



Immunofluorescence analysis of 293T cells using DiMethyl-Histone H4-K20 antibody. Blue: DAPI for nuclear staining.



Dot-blot analysis of all sorts of methylation peptides using DiMethyl-Histone H4-K20 antibody.



Immunohistochemistry of paraffin-embedded rat testis using DiMethyl-Histone H4-K20 antibody at dilution of 1:200 (40x lens).