

Histone H3K27me3 (H3K27 Trimethyl) Polyclonal Antibody

(Catalog # A-4039)

Description

Histone H3K27me3 (H3K27 Trimethyl) Polyclonal Antibody. Unconjugated. Raised in: Rabbit.

Formulation

PBS with 0.02% sodium azide, 50% glycerol, pH7.3.

Specificity

Broad Range, Mouse, Rat, Human

Isotype

IgG

Uniprot ID

Q16695

Purification

Affinity Purified

Immunogen

A synthetic trimethylated peptide around K27 of human histone H3 (NP_003520.1)

Storage

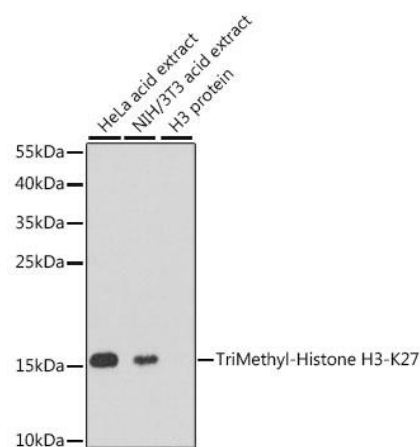
Shipped at 4°C. Upon receipt, store at -20°C. Avoid repeated freeze.

Alternative Names

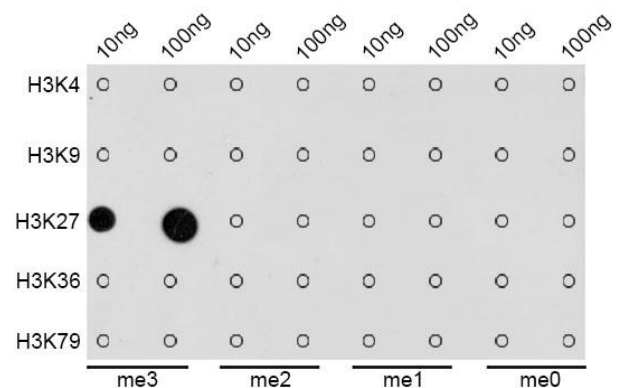
HIST3H3, H3/g

Application

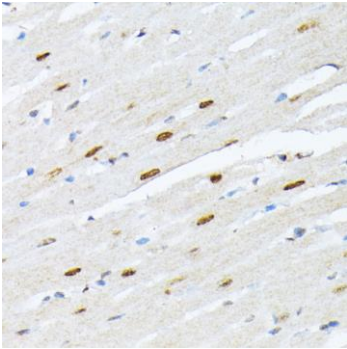
WB, IHC, IF, IP, CHIP, ChIPseq; Recommended dilution: WB 1:500 - 1:2000 IHC 1:50 - 1:200 IF 1:50 - 1:200 IP 1:50 - 1:200 ChIP 1:20 - 1:100 CHIPseq 1:20 - 1:100



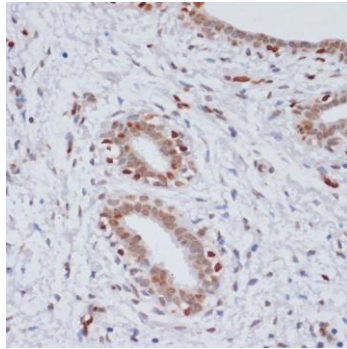
Western blot analysis of extracts of various cell lines, using TriMethyl-Histone H3-K27 antibody at 1:1000 dilution.
Secondary antibody: HRP Goat Anti-Rabbit IgG (H+L) at 1:10000 dilution. Lysates/proteins: 25ug per lane.
Blocking buffer: 3% nonfat dry milk in TBST.



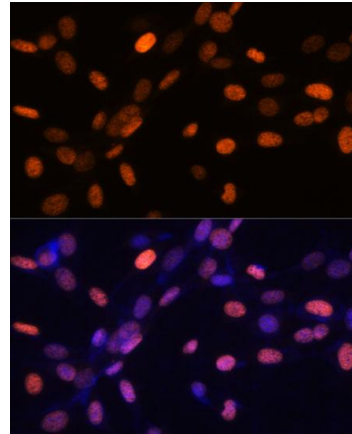
Dot-blot analysis of all sorts of methylation peptides using TriMethyl-Histone H3-K27 antibody.



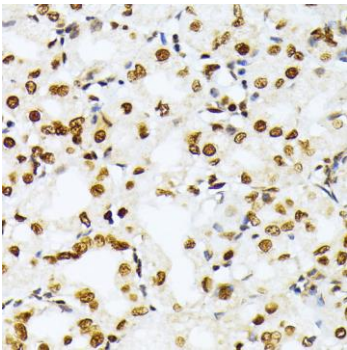
IHC of paraffin-embedded rat heart using TriMethyl-Histone H3-K27 antibody at dilution of 1:100 (40x lens).



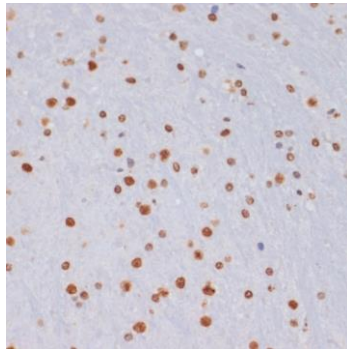
IHC of paraffin-embedded human breast cancer using TriMethyl-Histone H3-K27 antibody at dilution of 1:100 (40x lens).



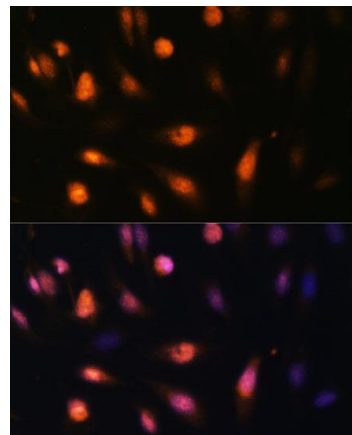
IF analysis of NIH/3T3 cells using TriMethyl-Histone H3-K27 antibody at dilution of 1:100. Blue: DAPI for nuclear staining.



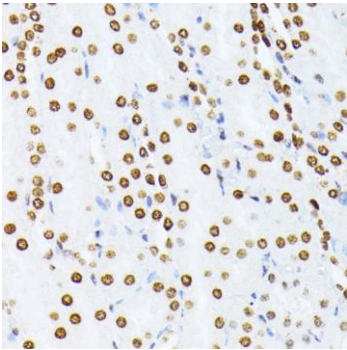
IHC of paraffin-embedded human stomach using TriMethyl-Histone H3-K27 antibody at dilution of 1:100 (40x lens).



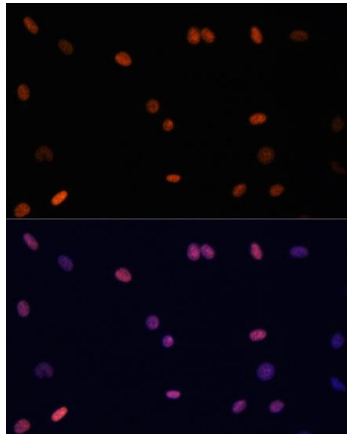
IHC of paraffin-embedded mouse brain using TriMethyl-Histone H3-K27 antibody at dilution of 1:100 (40x lens).



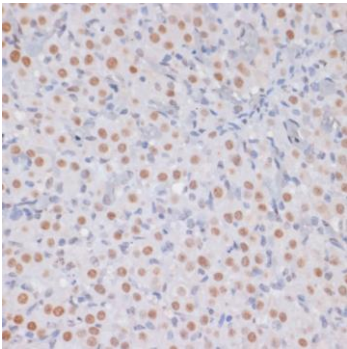
IF analysis of U-2 OS cells using TriMethyl-Histone H3-K27 antibody at dilution of 1:100. Blue: DAPI for nuclear staining.



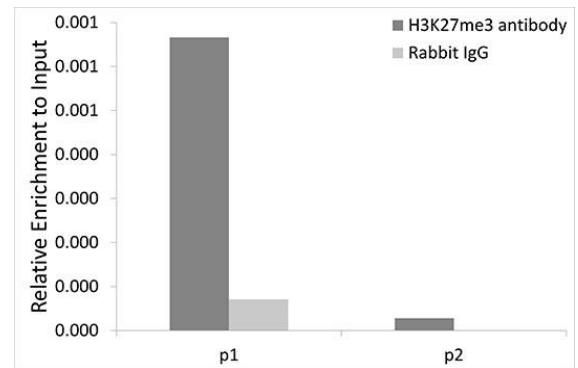
IHC of paraffin-embedded mouse kidney using TriMethyl-Histone H3-K27 antibody at dilution of 1:100 (40x lens).



IHC analysis of C6 cells using TriMethyl-Histone H3-K27 antibody at dilution of 1:100. Blue: DAPI for nuclear staining.



IHC of paraffin-embedded rat ovary using TriMethyl-Histone H3-K27 antibody at dilution of 1:100 (40x lens).



Chromatin immunoprecipitation analysis of extracts of 293T cells, using TriMethyl-Histone H3-K27 antibody and rabbit IgG. P1 and P2 were located on ANO2 gene. The amount of immunoprecipitated DNA was checked by quantitative PCR. Histogram was constructed by the ratios of the immunoprecipitated DNA to the input.