
p300 Polyclonal Antibody

(Catalog # A-4020)

Background

p300, also known as EP300 or E1A binding protein p300, is a universally expressed, reasonably stable nuclear phosphoprotein that is closely related to CBP (or CREB). CBP and p300 are identified as transcriptional coactivators that can directly interact with several different DNA-binding transcription factors including nuclear hormone receptors, CREB, c-Fos, C-Jun/v-Jun, c-Myb/v-Myb, TFIIB and MyoD. These two proteins have been known to exhibit histone acetyltransferase (HAT) activity and can acetylate all four core histones in the nucleosome. It is believed that both p300 and CBP may be directly involved in activating chromatin for transcription.

Description

p300 Polyclonal Antibody. Unconjugated. Raised in: Rabbit.

Formulation

Liquid in PBS containing 50% glycerol, 0.5% BSA and 0.02% sodium azide.

Specificity

Human, Mouse, Rat

Isotype

IgG

Uniprot ID

Q09472

Purification

Affinity Purified

Immunogen

Synthesized peptide derived from Human p300 around the non-phosphorylation site of S89

Storage

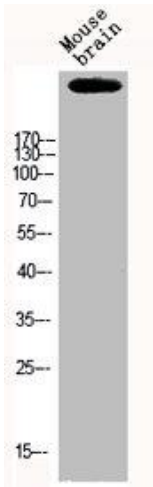
Shipped at 4°C. Aliquot store at -20°C . Avoid repeated freeze / thaw cycles.

Alternative Names

CREBBP/EP300 inhibitory protein 1 antibody, P-300, Cyclic AMP responsive enhancer binding protein antibody, E1A associated protein p300 antibody, E1A binding protein p300 antibody, EC 2.3.1.48 antibody, EP300 antibody, Histone acetyltransferase p300 antibody, p300 HAT antibody, RB and P300 binding protein EID 1 antibody, Retinoblastoma protein associated protein antibody, RSTS2 antibody

Application

WB, IHC, ELISA; Recommended dilution: WB:1:500-1:2000, IHC:1:100-1:300, ELISA:1:5000



Western Blot analysis of Mouse brain cells using p300 Polyclonal Antibody