
Histone H3R2 Dimethyl Asymmetric (H3R2me2a) Polyclonal Antibody

(Catalog # A-3714)

Background

Histones are basic nuclear proteins that are responsible for the nucleosome structure of the chromosomal fiber in eukaryotes. Nucleosomes consist of approximately 146 bp of DNA wrapped around a histone octamer composed of pairs of each of the four core histones (H2A, H2B, H3, and H4). The chromatin fiber is further compacted through the interaction of a linker histone, H1, with the DNA between the nucleosomes to form higher order chromatin structures. This gene is intronless and encodes a member of the histone H3 family. Transcripts from this gene lack polyA tails; instead, they contain a palindromic termination element. This gene is located separately from the other H3 genes that are in the histone gene cluster on chromosome 6p22-p21. 3.

Description

Histone H3R2 Dimethyl Asymmetric (H3R2me2a) Polyclonal Antibody. Unconjugated. Raised in: Rabbit.

Formulation

PBS with 0.02% sodium azide, 50% glycerol, pH7.3.

Specificity

Human, Mouse, Rat, Broad Range

Isotype

IgG

Uniprot ID

Q16695

Purification

Affinity Purified

Immunogen

A synthetic asymmetric dimethylated peptide around R2 of human histone H3 (NP_003520.1)

Storage

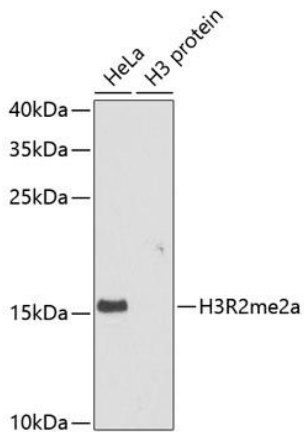
Shipped at 4°C. Upon receipt, store at -20°C. Avoid repeated freeze.

Alternative Names

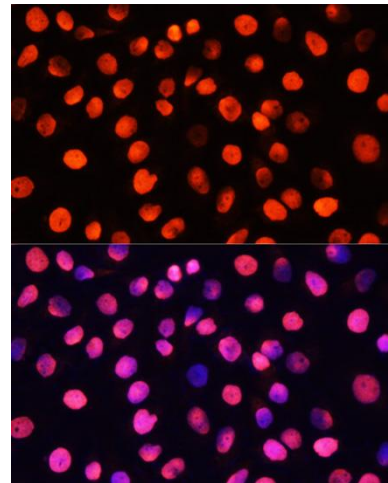
H3R2me2a, HIST1H3J, H3/j , H3FJ , Histone H3.1, Histone H3/a, Histone H3/b, Histone H3/c, Histone H3/d, Histone H3/f, Histone H3/h , Histone H3/l, Histone H3/j , Histone H3/k, Histone H3/l, H3 Arginine 2 me2a

Application

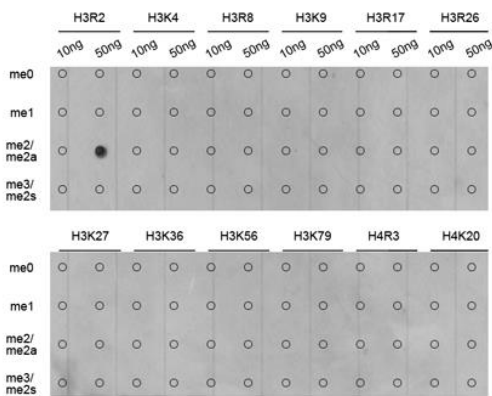
WB, IF, IP, ChIP, ChIP-seq



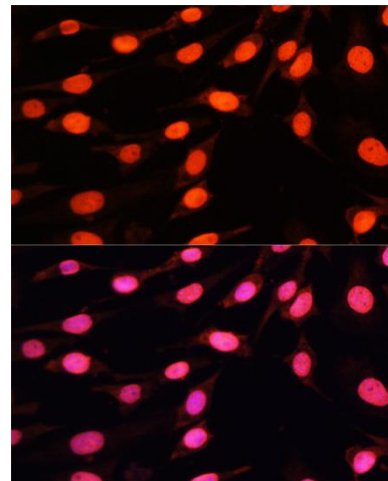
Western blot analysis of extracts of various cell lines, using Histone H3R2 Dimethyl Asymmetric (H3R2me2a) Polyclonal Antibody at 1:1000 dilution.
 Secondary antibody: HRP Goat Anti-Rabbit IgG (H+L) at 1:10000 dilution.
 Lysates/proteins: 25ug per lane.
 Blocking buffer: 3% nonfat dry milk in TBST.



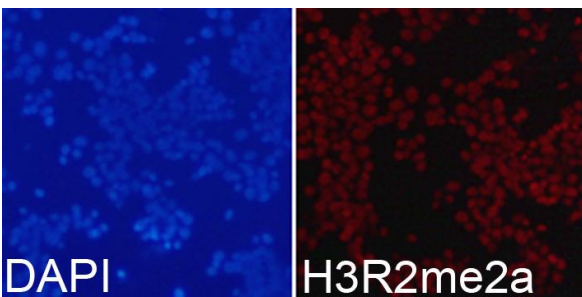
Immunofluorescence analysis of HeLa cells using Histone H3R2 Dimethyl Asymmetric (H3R2me2a) Polyclonal Antibody at dilution of 1:100. Blue: DAPI for nuclear staining.



Dot-blot analysis of all sorts of methylation peptides using Histone H3R2 Dimethyl Asymmetric (H3R2me2a) Polyclonal Antibody.



Immunofluorescence analysis of NIH/3T3 cells using Histone H3R2 Dimethyl Asymmetric (H3R2me2a) Polyclonal Antibody at dilution of 1:100. Blue: DAPI for nuclear staining.



Immunofluorescence analysis of 293T cells using Histone H3R2 Dimethyl Asymmetric (H3R2me2a) Polyclonal Antibody. Blue: DAPI for nuclear staining.