

Histone H3R17 Dimethyl Asymmetric (H3R17me2a) Polyclonal Antibody

(Catalog A-3709)

Description

Histone H3R17 Dimethyl Asymmetric (H3R17me2a) Polyclonal Antibody. Unconjugated. Raised in: Rabbit.

Formulation

Buffer: PBS with 0.02% sodium azide, 50% glycerol, pH7.3.

Specificity

Human, Mouse, Rat, Broad Range

Isotype

IgG

Uniprot ID

Q16695/P68431

Purification

Affinity Purified

Immunogen

A synthetic peptide corresponding to a sequence within amino acids 1-100 of human histone H3 (NP_003520.1).

Storage

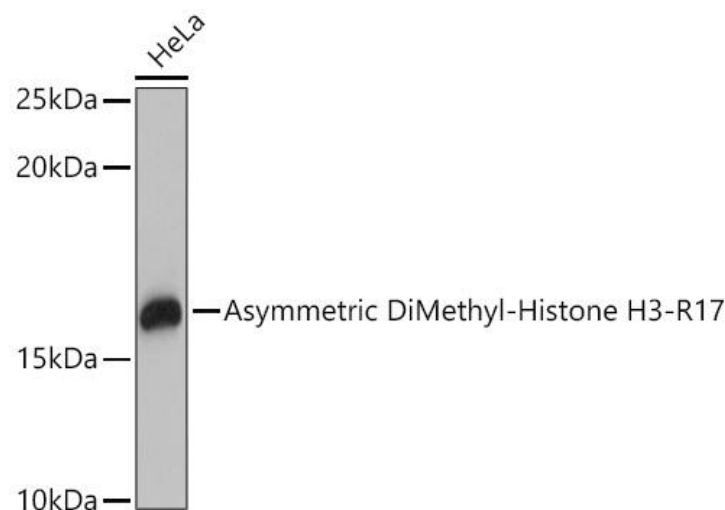
Shipped at 4°C. Upon receipt, store at -20°C. Avoid repeated freeze.

Alternative Names

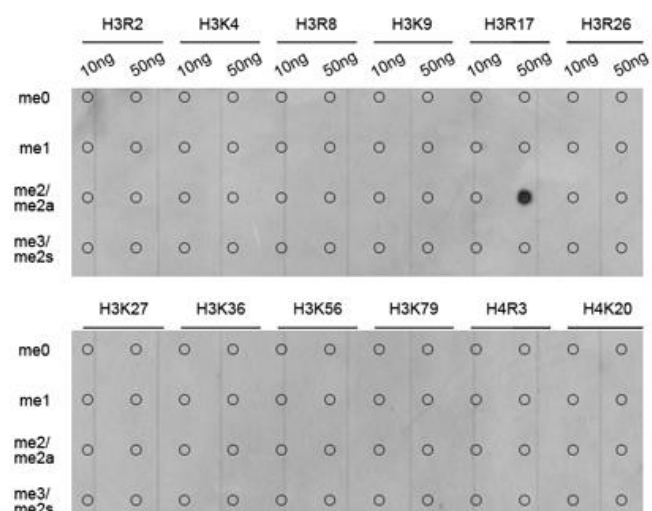
H3R17me2a, HIST1H3J, H3/j , H3FJ , Histone H3.1, Histone H3/a, Histone H3/b, Histone H3/c, Histone H3/d, Histone H3/f, Histone H3/h , Histone H3/l, Histone H3/j , Histone H3/k, Histone H3/l, H3 Arginine 17 me2a

Applications

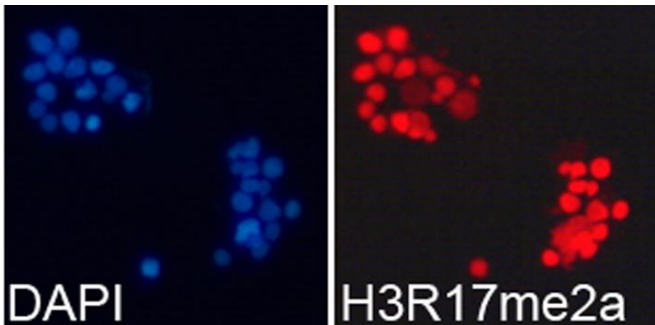
WB, IF/ICC, ELISA; Recommended dilution: WB 1:500 - 1:1000, IF 1:50 - 1:200, ELISA - recommended starting concentration is 1 µg/mL. Please optimize the concentration based on your specific assay requirements.



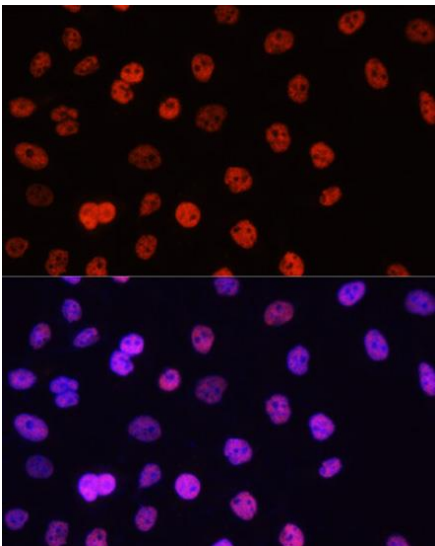
Western blot analysis of lysates from HeLa cells using Histone H3R17 Dimethyl Asymmetric (H3R17me2a) Polyclonal Antibody at 1:1000 dilution incubated overnight at 4°C. Secondary antibody: HRP-conjugated Goat anti-Rabbit IgG (H+L) at 1:10000 dilution. Lysates/proteins: 25 µg per lane. Blocking buffer: 3% nonfat dry milk in TBST. Exposure time: 10s.



Dot-blot analysis of all sorts of methylation peptides using Histone H3R17 Dimethyl Asymmetric (H3R17me2a) Polyclonal Antibody.



Immunofluorescence analysis of 293T cells using Histone H3R17 Dimethyl Asymmetric (H3R17me2a) Polyclonal Antibody. Blue: DAPI for nuclear staining.



Immunofluorescence analysis of HeLa cells using Histone H3R17 Dimethyl Asymmetric (H3R17me2a) Polyclonal Antibody at dilution of 1:100. Secondary antibody: Cy3-conjugated Goat anti-Rabbit IgG (H+L) at 1:500 dilution. Blue: DAPI for nuclear staining.