
Histone H3R8 Dimethyl Symmetric (H3R8me2s) Polyclonal Antibody

(Catalog # A-3706)

Background

Histones are basic nuclear proteins that are responsible for the nucleosome structure of the chromosomal fiber in eukaryotes. Nucleosomes consist of approximately 146 bp of DNA wrapped around a histone octamer composed of pairs of each of the four core histones (H2A, H2B, H3, and H4). The chromatin fiber is further compacted through the interaction of a linker histone, H1, with the DNA between the nucleosomes to form higher order chromatin structures. This gene is intronless and encodes a replication-dependent histone that is a member of the histone H3 family. Transcripts from this gene lack polyA tails; instead, they contain a palindromic termination element. This gene is located separately from the other H3 genes that are in the histone gene cluster on chromosome 6p22-p21.3

Description

Histone H3R8 Dimethyl Symmetric (H3R8me2s) Polyclonal Antibody. Unconjugated. Raised in: Rabbit.

Formulation

PBS with 0.02% sodium azide, 50% glycerol, pH7.3.

Specificity

Human, Mouse, Rat, Broad Range

Isotype

IgG

Uniprot ID

Q16695

Purification

Affinity Purified

Immunogen

A synthetic symmetric dimethylated peptide around R8 of human histone H3 (NP_003520.1).

Storage

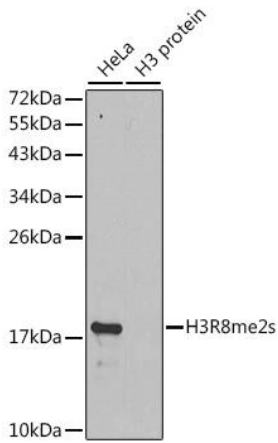
Shipped at 4°C. Store at -20°C. Avoid multiple freeze/thaw cycles.

Alternative Names

HIST3H3; H3.4; H3/g; H3FT; H3t; histone H3.1t

Application

WB, IHC, IF, IP, ChIP, ChIPseq; Recommended dilutions: WB 1:500 - 1:2000, IHC 1:50 - 1:200, IF 1:50 - 1:200, IP 1:50 - 1:200, CHIP 1:20 - 1:50, CHIPseq 1:20 - 1:50

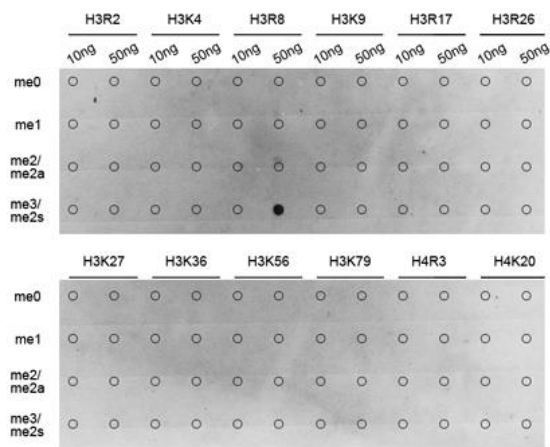


Western blot analysis of extracts of various cell lines, using Histone H3R8 Dimethyl Symmetric (H3R8me2s) Polyclonal Antibody.

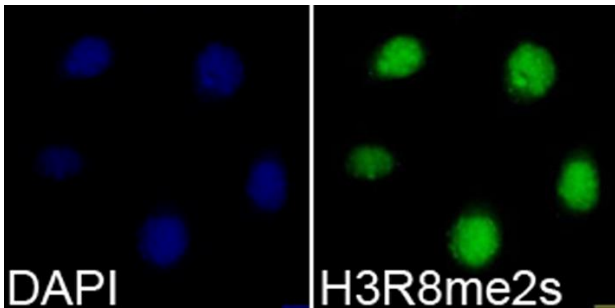
Secondary antibody: HRP Goat Anti-Rabbit IgG (H+L) at 1:10000 dilution.

Lysates/proteins: 25ug per lane.

Blocking buffer: 3% nonfat dry milk in TBST.



Dot-blot analysis of all sorts of methylation peptides using Histone H3R8 Dimethyl Symmetric (H3R8me2s) Polyclonal Antibody.



Immunofluorescence analysis of 293T cells using Histone H3R8 Dimethyl Symmetric (H3R8me2s) Polyclonal Antibody. Blue: DAPI for nuclear staining.