
LSD1 Polyclonal Antibody

(Catalog # A-3018)

Background

LSD1 is a nuclear homolog of amine oxidases and functions as a histone demethylase and transcriptional corepressor. LSD1 specifically demethylates histone H3 lysine 4, which is linked to active transcription. LSD1 is highly conserved between organisms ranging from the fission yeast *Saccharomyces pombe* to humans. LSD1 associates with other histone-modifying enzymes such as histone deacetylases and methyltransferases. In concert with transcription repression, loss of LSD1 function leads to depression of genes regulated by Co-REST, a protein involved in gene silencing and a member of the LSD1.

Description

LSD1 Polyclonal Antibody. Unconjugated. Raised in: Rabbit.

Formulation

0.03% Proclin 300. 50% Glycerol, 0.01M PBS, pH 7.4.

Specificity

Human, Mouse

Isotype

IgG

Uniprot ID

O60341

Purification

Protein G purified

Immunogen

Recombinant Human Lysine-specific histone demethylase 1A protein (100-150AA)

Storage

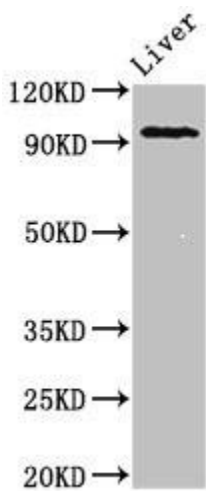
Shipped at 4°C. Store at -20°C or -80°C. Avoid repeated freeze.

Alternative Names

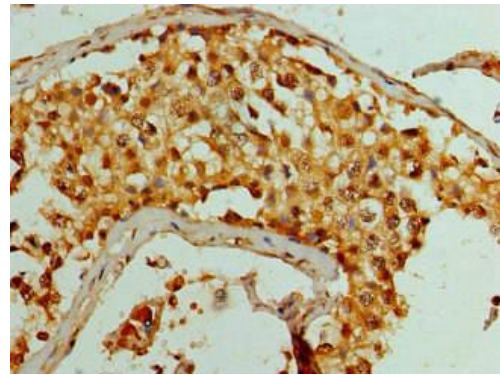
Amine oxidase flavin containing domain 2 antibody, AOF 2 antibody, BHC110 antibody, BRAF35 HDAC complex protein BHC110 antibody, FAD binding protein BRAF35 HDAC complex 110 kDa subunit antibody, Flavin containing amine oxidase domain containing protein 2 antibody, KDM 1 antibody, KIAA0601 antibody, LSD 1 antibody, Lysine (K) specific demethylase 1A antibody, Lysine specific histone demethylase 1 antibody

Application

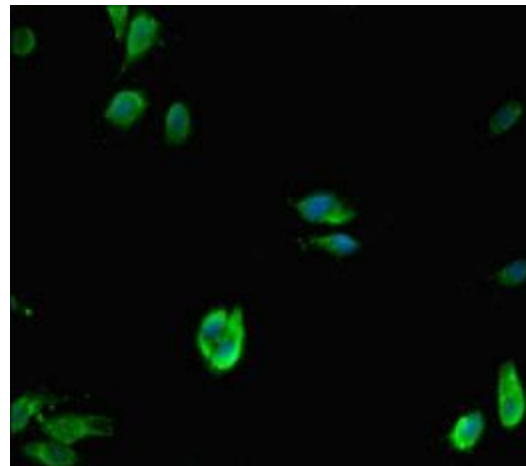
ELISA, WB, IHC, IF; Recommended dilution: WB:1:1000-1:5000, IHC:1:20-1:200, IF:1:50-1:200



Western Blot
Positive WB detected in: Mouse liver tissue
All lanes: LSD1 Polyclonal Antibody at 2ug/ml
Secondary
Goat polyclonal to rabbit IgG at 1/50000 dilution
Predicted band size: 93, 96 kDa
Observed band size: 93 kDa



Immunohistochemistry of paraffin-embedded human testis tissue using LSD1 Polyclonal Antibody at dilution of 1:100



Immunofluorescent analysis of HeLa cells using LSD1 Polyclonal Antibody at dilution of 1:100 and Alexa Fluor 488-conjugated AffiniPure Goat Anti-Rabbit IgG(H+L)