
PRMT5 Polyclonal Antibody

(Catalog # A-3005)

Background

Human Skb1Hs methyltransferase (also called JBP1), a homologue of yeast protein Skb1 and Hsl7p, is composed of 637 amino acid residues and contains motifs conserved among protein methyltransferases. It methylates histones and MBP in vitro. Yeast Hsl7p is involved in regulation of cell cycle progression through G2 by negatively regulating Swe1p, a protein tyrosine kinase that phosphorylates and inhibits Cdc28p. An Hsl7p homologue, Skb1, was identified in fission yeast by virtue of its yeast two-hybrid interaction with Shk1p, a p21 (cdc42p/Rac) activated kinase (PAK). Both proteins belong to the protein methyltransferase superfamily. Interestingly, human Skb1Hs methyltransferase was shown to interact with Jak kinases. This suggests the possibility that the Skb1Hs methyltransferase could link Jak to a PAK signaling pathway in mammalian cells.

Description

PRMT5 Polyclonal Antibody. Unconjugated. Raised in: Rabbit.

Formulation

Buffer: PBS with 0.02% sodium azide, 50% glycerol, pH7.3.

Specificity

Human, Mouse, Rat

Isotype

IgG

Uniprot ID

O14744

Purification

Affinity Purification

Immunogen

A synthetic peptide corresponding to a sequence within amino acids 40-140 of human PRMT5 (NP_006100.2).

Storage

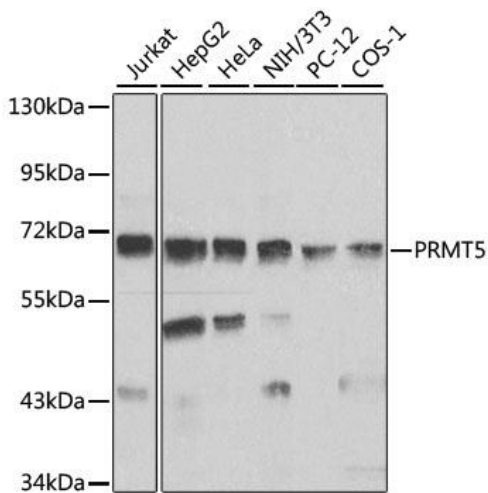
Shipped at 4°C. Upon receipt, store at -20°C. Avoid freeze / thaw cycles

Alternative Names

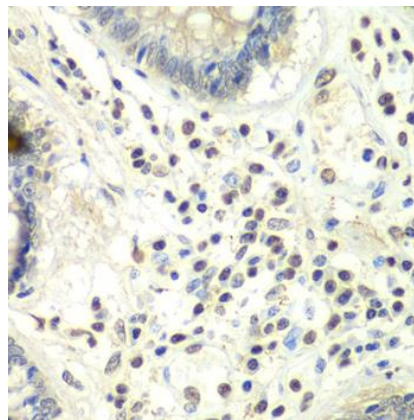
72 kDa ICln binding protein antibody, ANM5_HUMAN antibody, Histone synthetic lethal 7 S. cerevisiae homolog of antibody, Histone-arginine N-methyltransferase PRMT5 antibody, HMT1 hnRNP methyltransferase like 5 antibody, HRMT1L5 antibody, IBP72 antibody, Jak-binding protein 1 antibody, JBP 1 antibody, PRMT 5 antibody, Protein arginine N methyltransferase 5 N terminally processed antibody, S. Pombe antibody, Shk1 kinase binding protein 1 homolog antibody, SKB 1 antibody, SKB1Hs antibody

Application

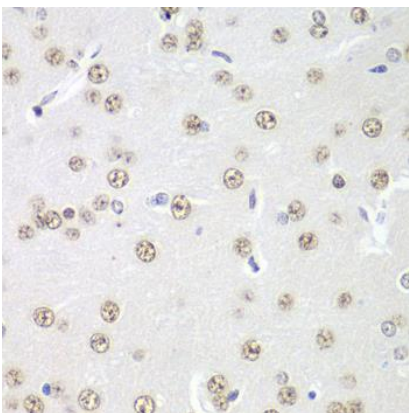
WB, IHC, IF; Recommended dilution: WB: 1:500-1:2000, IHC: 1:50-1:100, IF:1:50-1:200



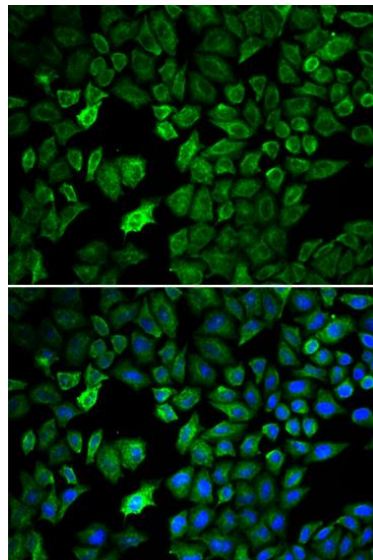
Western blot analysis of extracts of various cell lines, using PRMT5 antibody at 1:1000 dilution. Secondary antibody: HRP Goat Anti-Rabbit IgG (H+L) at 1:10000 dilution. Lysates/proteins: 25ug per lane. Blocking buffer: 3% nonfat dry milk in TBST.



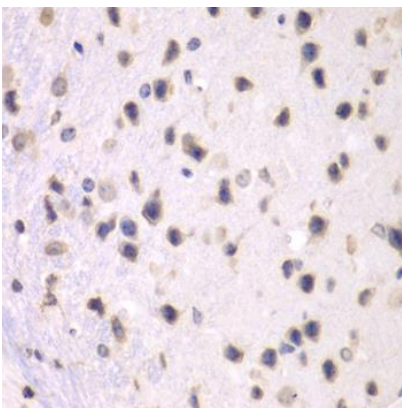
Immunohistochemistry of paraffin-embedded human colon using PRMT5 antibody at dilution of 1:100 (40x lens).



Immunohistochemistry of paraffin-embedded rat brain using PRMT5 antibody at dilution of 1:100 (40x lens).



Immunofluorescence analysis of U2OS cells using PRMT5 antibody. Blue: DAPI for nuclear staining.



Immunohistochemistry of paraffin-embedded mouse brain using PRMT5 antibody at dilution of 1:100 (40x lens).