

---

## EED Polyclonal Antibody

(Catalog # A-2020)

---

### Background

The EED gene encodes a member of the Polycomb-group (PcG) family. PcG family members form multimeric protein complexes, which are involved in maintaining the transcriptionally repressive state of genes over successive cell generations. This protein interacts with the enhancer of zeste 2, the cytoplasmic tail of integrin beta7, immunodeficiency virus type 1 (HIV1) MA protein, and histone deacetylase proteins. Also, the EED protein mediates repression of gene activity through histone deacetylation and may act as a specific regulator of integrin function.

### Description

EED Polyclonal Antibody. Unconjugated. Raised in: Rabbit.

### Formulation

Buffer: PBS with 0.02% sodium azide, 50% glycerol, pH7.3.

### Specificity

Human, Mouse, Rat

### Isotype

IgG

### Uniprot ID

O75530

### Purification

Affinity Purification

### Immunogen

Recombinant fusion protein containing a sequence corresponding to amino acids 1-300 of human EED (NP\_694536.1).

### Storage

Shipped at 4°C. Upon receipt, store at -20°C. Avoid freeze / thaw cycles

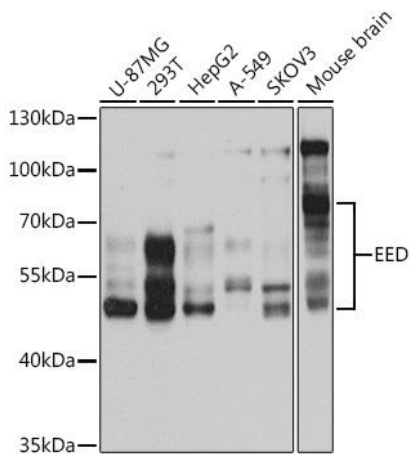
### Alternative Names

Embryonic ectoderm development isoform a antibody, Embryonic ECTODERM development protein homolog antibody, HEED antibody, OTTHUMP00000235483 antibody, OTTHUMP00000235484 antibody, OTTHUMP00000235485 antibody, Polycomb protein eed antibody, WAIT 1 antibody, WD protein associating with integrin cytoplasmic tails 1 antibody

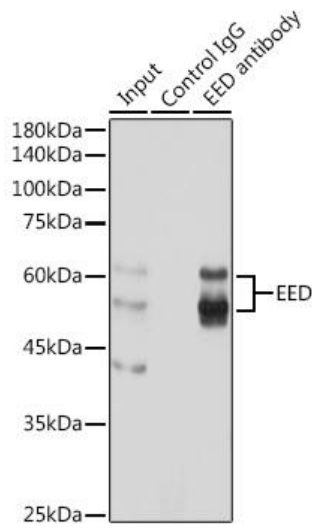
### Application

WB, IP; Recommended dilution: WB: 1:500-1:2000, IP:1:50-1:200

---



Western blot analysis of extracts of various cell lines, using EED Polyclonal Antibody at 1:1000 dilution.  
 Secondary antibody: HRP Goat Anti-Rabbit IgG (H+L) at 1:10000 dilution.  
 Lysates/proteins: 25ug per lane.  
 Blocking buffer: 3% nonfat dry milk in TBST.



Immunoprecipitation analysis of 300ug extracts of HeLa cells using 3ug EED Polyclonal Antibody.  
 Western blot was performed from the immunoprecipitate using EED Polyclonal Antibody at a dilution of 1:1000.