

---

## TET2 Polyclonal Antibody

(Catalog A-1701)

---

### Background

The protein encoded by this gene is a methylcytosine dioxygenase that catalyzes the conversion of methylcytosine to 5-hydroxymethylcytosine. The encoded protein is involved in myelopoiesis, and defects in this gene have been associated with several myeloproliferative disorders. Two variants encoding different isoforms have been found for this gene.

### Description

TET2 Polyclonal Antibody. Unconjugated. Raised in: Rabbit.

### Formulation

Buffer: PBS with 0.05% proclin300, 50% glycerol, pH7.3.

### Specificity

Human, Mouse, Rat

### Isotype

IgG

### Uniprot ID

Q6N021

### Purification

Affinity Purified

### Immunogen

Recombinant fusion protein containing a sequence corresponding to amino acids 303-470 of human TET2 (NP\_001120680.1).

### Storage

Shipped at 4°C. Store at -20°C. Avoid multiple freeze/thaw cycles.

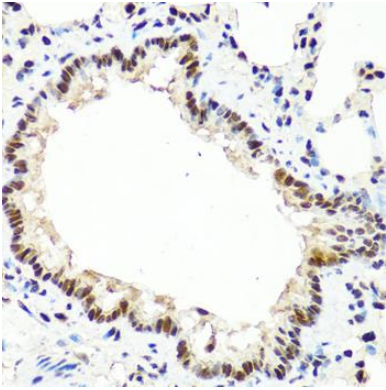
### Alternative Names

MDS, KIAA1546

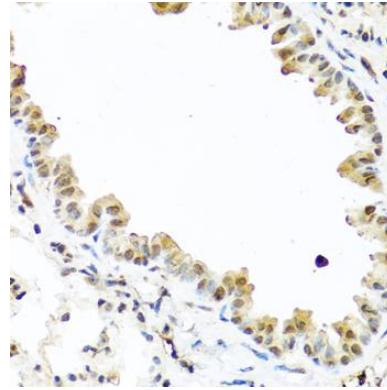
### Application

WB, IHC, IF; Recommended dilution: WB 1:500 - 1:1000, IHC 1:50 - 1:200, IF 1:50 - 1:200

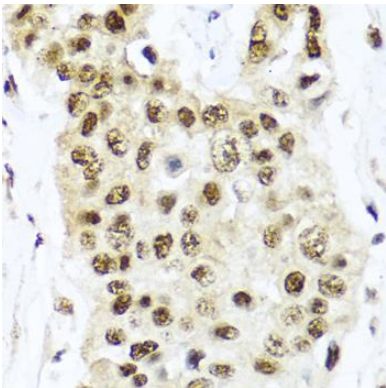
---



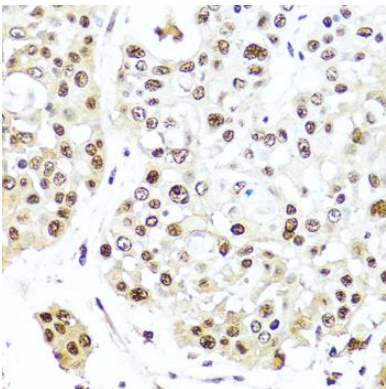
Immunohistochemistry of paraffin-embedded rat lung using TET2 Polyclonal Antibody at dilution of 1:100 (40x lens).



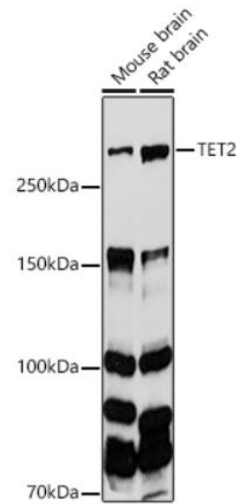
Immunohistochemistry of paraffin-embedded mouse lung using TET2 Polyclonal Antibody at dilution of 1:100 (40x lens).



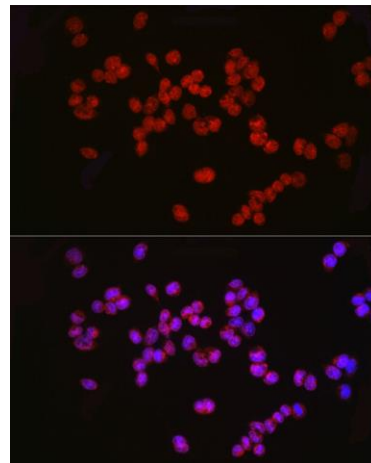
Immunohistochemistry of paraffin-embedded human lung cancer using TET2 Polyclonal Antibody at dilution of 1:100 (40x lens).



Immunohistochemistry of paraffin-embedded human colon carcinoma using TET2 Polyclonal Antibody at dilution of 1:100 (40x lens).



Western blot analysis of extracts of various cell lines, using TET2 Polyclonal Antibody at 1:1000 dilution. Secondary antibody: HRP Goat Anti-Rabbit IgG (H+L) at 1:10000 dilution. Lysates/proteins: 25ug per lane. Blocking buffer: 3% nonfat dry milk in TBST.



Immunofluorescence analysis of F9 cells using TET2 Polyclonal Antibody at dilution of 1:50 (40x lens). Blue: DAPI for nuclear staining.