

# TET1 Polyclonal Antibody

(Catalog # A-1020)

## Background

TET1 (tet oncogene 1), also known as LCX or CXXC6, is a 2,136 amino acid protein that localizes to the nucleus and contains one CXXC-type zinc finger. Expressed in adult ovary, thymus and skeletal muscle and also present in fetal lung, heart and brain, TET1 is thought to play a role in the development of fetal organs and may also be involvement in the pathogenesis and metastasis of acute myeloid leukemia (AML). The gene encoding TET1 maps to human chromosome 10, which houses over 1,200 genes and comprises nearly 4.5% of the human genome. Defects in some of the genes that map to chromosome 10 are associated with Charcot-Marie Tooth disease, Jackson-Weiss syndrome, Usher syndrome, nonsyndromic deafness, Wolman's syndrome, Cowden syndrome, multiple endocrine neoplasia type 2 and porphyria.

## Description

TET1 Polyclonal Antibody. Unconjugated. Raised in: Rabbit.

## Formulation

Buffer: PBS with 0.05% proclin300, 50% glycerol, pH7.3.

## Specificity

Mouse, Rat, Human

## Isotype

IgG

## Uniprot ID

Q8NFU7

## Purification

Affinity Purified

## Immunogen

A synthetic peptide corresponding to a sequence within amino acids 1800-1900 of human TET1 (NP\_085128.2).

## Storage

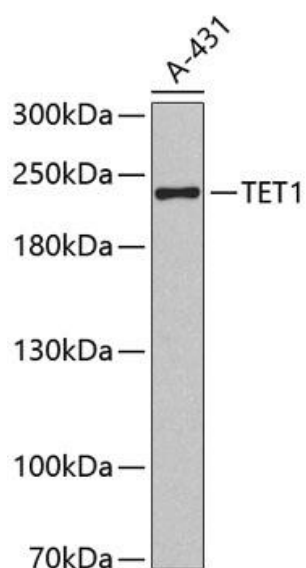
Shipped at 4°C. Store at -20°C. Avoid multiple freeze/thaw cycles.

## Alternative Names

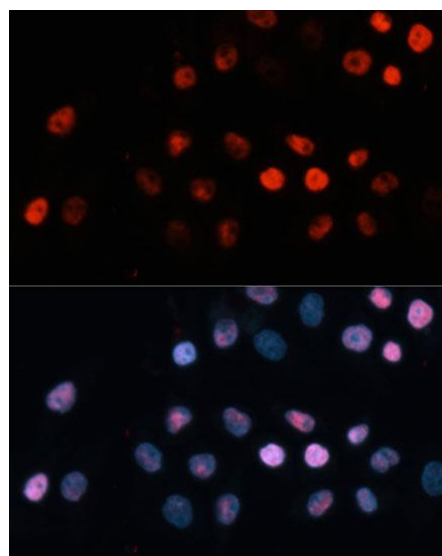
bA119F7.1 antibody, CXXC 6 antibody, CXXC finger 6 antibody, CXXC type zinc finger protein 6 antibody, KIAA1676 antibody, LCX antibody, Leukemia associated protein with a CXXC domain antibody, Methylcytosine dioxygenase TET1 antibody, Ten eleven translocation 1 antibody, Ten eleven translocation 1 gene protein homolog antibody, Tet 1 antibody, Tet methylcytosine dioxygenase 1 antibody, Tet oncogene 1 antibody, TET1 antibody, TET1\_HUMAN antdy

## Application

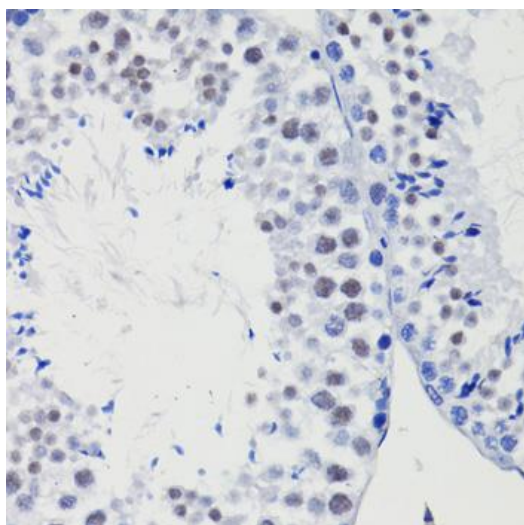
WB, IHC, IF; Recommended dilution: WB 1:500 - 1:1000; IHC 1:50 - 1:200; IF 1:50 - 1:200



Western blot analysis of extracts of A-431 cells, using TET1 antibody.  
 Secondary antibody: HRP Goat Anti-Rabbit IgG (H+L) at 1:10000 dilution.  
 Lysates/proteins: 25ug per lane.  
 Blocking buffer: 3% nonfat dry milk in TBST.



Immunofluorescence analysis of HeLa cells using TET1 Polyclonal Antibody at dilution of 1:100 (40x lens). Blue: DAPI for nuclear staining.



Immunohistochemistry of paraffin-embedded mouse testis using TET1 antibody at dilution of 1:100 (40x lens).