

MeCP2 Polyclonal Antibody

(Catalog # A-1012)

Background

DNA methylation is the major modification of eukaryotic genomes and plays an essential role in mammalian development. Methyl-CpG binding protein 2 (MeCP2), which can bind to methylated DNA in vivo and in vitro, may serve as a methylation-dependent transcriptional repressor by association with known co-repressor proteins, which include members of the histone deacetylase protein families.

Description

MeCP2 Polyclonal Antibody. Unconjugated. Raised in: Rabbit.

Formulation

Buffer: PBS with 0.02% sodium azide, 50% glycerol, pH7.3.

Specificity

Mouse, Rat

Isotype

IgG

Uniprot ID

P51608

Purification

Affinity Purification

Immunogen

A synthetic peptide corresponding to a sequence within amino acids 1-100 of human MECP2 (NP_004983.1).

Storage

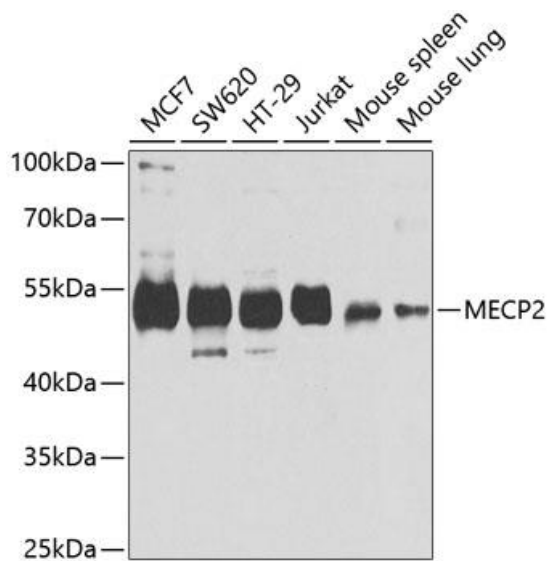
Shipped at 4°C. Upon receipt, store at -20°C. Avoid freeze / thaw cycles

Alternative Names

AUTSX 3 antibody, DKFZp686A24160 antibody, Mbd 5 antibody, MECP 2 antibody, MeCP 2 protein antibody, MeCP2 antibody, Mecp2 antibody, MECP2_HUMAN antibody, Methyl CpG binding protein 2 (Rett syndrome) antibody, Methyl CpG binding protein 2 antibody, MRX 16 antibody, MRX 79 antibody, MRXS 13 antibody, MRXSL antibody, PPMX antibody, RS antibody, RTS antibody, RTT antibody, WBP 10 antibody

Application

WB; Recommended dilution: WB: 1:500-1:2000



Western blot analysis of extracts of various cell lines, using MECP2 antibody at 1:1000 dilution.
Secondary antibody: HRP Goat Anti-Rabbit IgG (H+L) at 1:10000 dilution.
Lysates/proteins: 25ug per lane.
Blocking buffer: 3% nonfat dry milk in TBST.