
MBD1 Polyclonal Antibody

(Catalog # A-1006)

Background

DNA methylation is the major modification of eukaryotic genomes and it plays an essential role in mammalian development. Methyl-CpG binding domain protein 1 (MBD1), which can bind to methylated DNA in vivo and in vitro, may serve as a methylation-dependent transcriptional repressor.

Description

MBD1 Polyclonal Antibody. Unconjugated. Raised in: Rabbit.

Formulation

Liquid. 0.03% Proclin 300, 50% Glycerol, 0.01M PBS, pH 7.4

Specificity

Human

Isotype

IgG

Uniprot ID

Q9UIS9

Purification

Protein G purified

Immunogen

Recombinant Human Methyl-CpG-binding domain protein 1 protein (106-355AA)

Storage

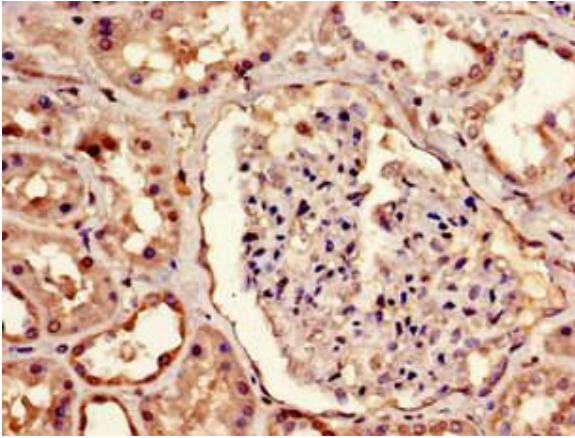
Upon receipt, store at -20°C or -80°C. Avoid repeated freeze.

Alternative Names

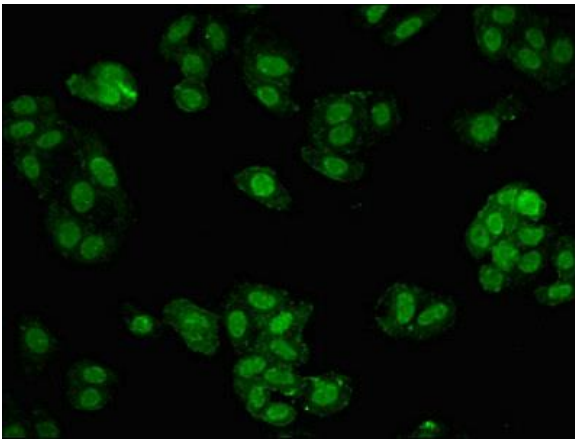
CXXC 3 antibody, CXXC-type zinc finger protein 3 antibody, MBD 1 antibody, MBD1_HUMAN antibody, MECP1 COMPLEX antibody, Methyl CpG binding domain protein 1 antibody, Methyl CpG binding domain protein 1 isoform PCM1 antibody, Methyl CpG binding protein MBD1 antibody, PCM 1 antibody, Protein containing methyl CpG binding domain 1 antibody, Regulator of fibroblast growth factor 2 (FGF 2) transcription antibody, RFT antibody

Application

ELISA, IHC, IF; Recommended dilution: IHC:1:20-1:200, IF:1:50-1:200



Immunohistochemistry of paraffin-embedded human kidney tissue using MBD1 Antibody at dilution of 1:100



Immunofluorescent analysis of HepG2 cells using MBD1 Antibody at dilution of 1:100 and Alexa Fluor 488-conjugated AffiniPure Goat Anti-Rabbit IgG(H+L)