
Recombinant SARS-COV-2 S1+S2 ECD(S-ECD) Protein with His tag (Pre-Fusion)

(Catalog # E80029)

Description

Recombinant SARS-COV-2 S1+S2 ECD(S-ECD) Protein is produced by HEK293 cells expression system. The target protein is expressed with sequence (Val11-Gln1208) of SARS-COV-2 S1+S2 ECD(S-ECD) (Accession #YP_009724390.1) fused with a 6xHis tag at the C-terminus. It is the wildtype sequence in pre-fusion state without any mutation.

Bio-Activity

Measured by its binding ability in a functional ELISA. Immobilized SARS-CoV-2 S1+S2 ECD(S-ECD) at 2µg/mL (100 µL/well) can bind recombinant Human ACE2 with a linear range of 0.15-3.72 ng/mL.

Purity

> 95% by SDS-PAGE.

Endotoxin

< 0.1 EU/µg of the protein by LAL method.

Formulation

Supplied as a 0.22 µm filtered solution in PBS, pH 7.4.

Species

SARS-CoV-2

Expressed Host

HEK293 cells

Tag

6xHis tag at the C-terminus

Gene ID

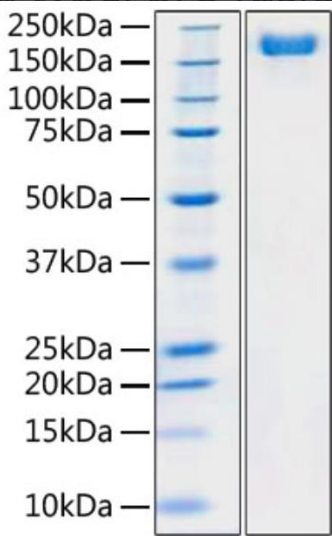
43740568

Storage

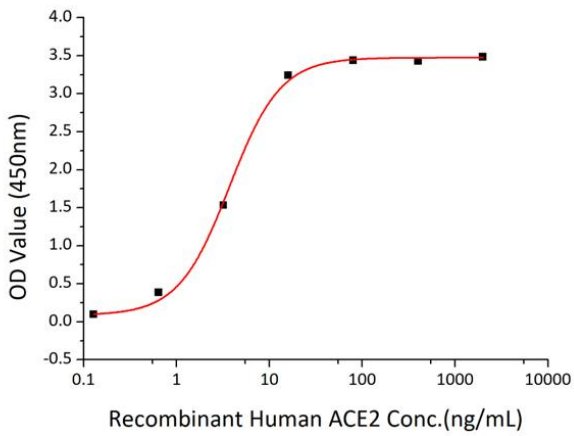
The product is shipped with ice or equivalent. Upon receipt, store it immediately at ≤ -70°C for. For optimal storage, aliquot into smaller quantities after centrifugation and store at the recommended temperature. Avoid repeated freeze/thaw cycles.

Alternative Names

cov spike Protein; 2019-nCoV;ncov spike Protein; 2019-nCoV;coronavirus spike Protein; 2019-nCoV;S glycoprotein; COVID-19;S protein; Spike glycoprotein



Recombinant SARS-COV-2 S1+S2 ECD(S-ECD) Protein with His tag was determined by SDS-PAGE with Coomassie Blue, showing a band at 180 kDa.



Immobilized SARS-CoV-2 S1+S2 ECD(S-ECD) at 2 μ g/mL (100 μ L/well) can bind recombinant Human ACE2 with a linear range of 0.15-3.72 ng/mL.