

## SETD3 Polyclonal Antibody

(Catalog #A73175)

### Description

SETD3 Polyclonal Antibody. Unconjugated. Raised in: Rabbit.

### Formulation

Buffer: PBS with 0.02% sodium azide, 50% glycerol, pH7.3.

### Specificity

Human, Mouse

### Isotype

IgG

### Uniprot ID

Q86TU7

### Purification

Affinity Purification

### Immunogen

A synthetic peptide corresponding to a sequence within amino acids 1-100 of human SETD3 (NP\_115609.2).

### Storage

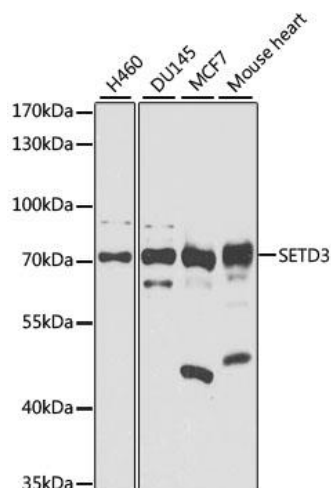
Shipped at 4°C. Upon receipt, store at -20°C. Avoid freeze / thaw cycles

### Alternative Names

SETD3; C14orf154; SET domain containing 3

### Application

ELISA, WB; Recommended dilution: WB 1:500 - 1:2000



Western blot analysis of extracts of various cell lines, using SETD3 Polyclonal Antibody at 1:1000 dilution. Secondary antibody: HRP Goat Anti-Rabbit IgG (H+L) at 1:10000 dilution. Lysates/proteins: 25ug per lane. Blocking buffer: 3% nonfat dry milk in TBST. Exposure time: 30s.