
SLC7A2 Polyclonal Antibody

(Catalog # A72983)

Background

The protein encoded by this gene is a cationic amino acid transporter and a member of the APC (amino acid-polyamine-organocation) family of transporters. The encoded membrane protein is responsible for the cellular uptake of arginine, lysine and ornithine. Three transcript variants encoding different isoforms have been found for this gene.

Description

SLC7A2 Polyclonal Antibody. Unconjugated. Raised in: Rabbit.

Formulation

Buffer: PBS with 0.05% proclin300, 50% glycerol, pH7.3.

Specificity

Human, Mouse, Rat

Isotype

IgG

Uniprot ID

P52569

Purification

Affinity Purification

Immunogen

A synthetic peptide corresponding to a sequence within amino acids 500 to the C-terminus of human SLC7A2 (NP_001008539.3).

Storage

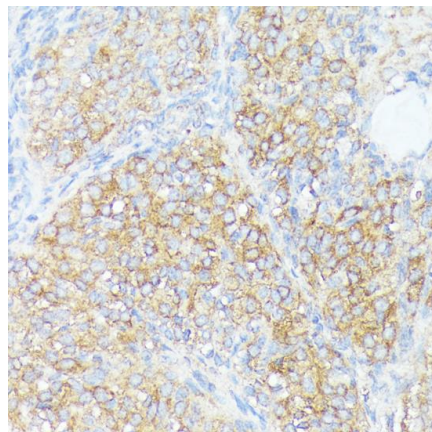
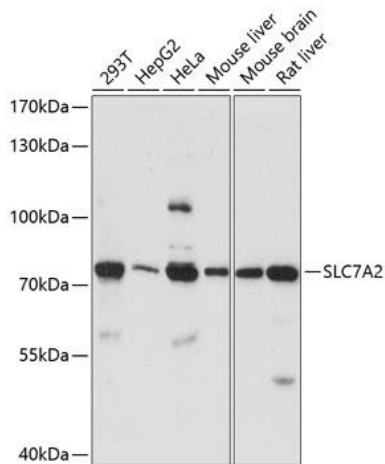
Shipped at 4°C. Upon receipt, store at -20°C. Avoid freeze / thaw cycles

Alternative Names

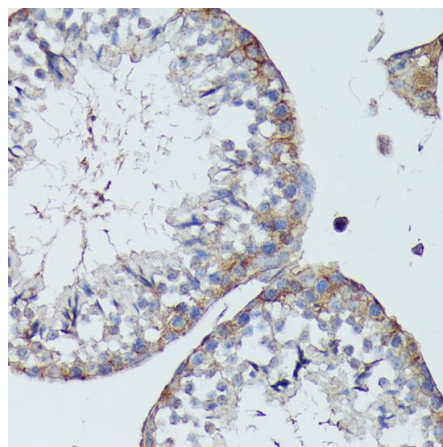
SLC7A2; ATRC2; CAT2; HCAT2; solute carrier family 7 member 2

Application

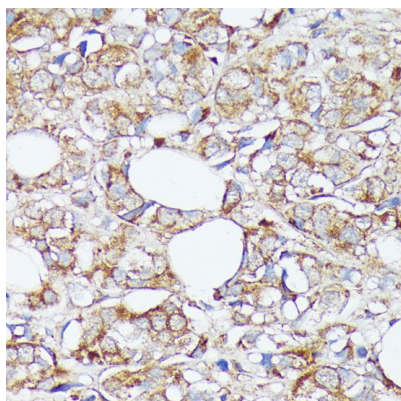
WB, IHC: Recommended dilution: WB 1:500 - 1:1000, IHC-P 1:50 - 1:100



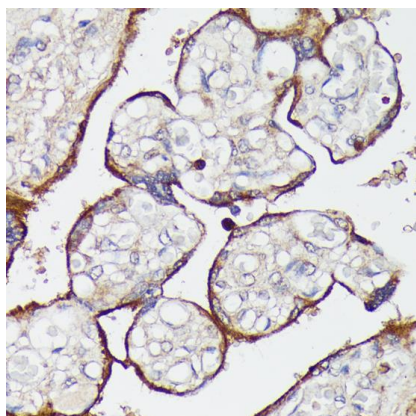
Immunohistochemistry of paraffin-embedded rat ovary using SLC7A2 Polyclonal Antibody at dilution of 1:100 (40x lens).



Immunohistochemistry of paraffin-embedded mouse testis using SLC7A2 Polyclonal Antibody at dilution of 1:100 (40x lens).



Immunohistochemistry of paraffin-embedded human mammary cancer using SLC7A2 Polyclonal Antibody at dilution of 1:100 (40x lens).



Immunohistochemistry of paraffin-embedded human placenta using SLC7A2 Polyclonal Antibody at dilution of 1:100 (40x lens).