

BCL2 Polyclonal Antibody

(Catalog # A72934)

Background

This gene encodes an integral outer mitochondrial membrane protein that blocks the apoptotic death of some cells such as lymphocytes. Constitutive expression of BCL2, such as in the case of translocation of BCL2 to Ig heavy chain locus, is thought to be the cause of follicular lymphoma. Alternative splicing results in multiple transcript variants.

Description

BCL2 Polyclonal Antibody. Unconjugated. Raised in: Rabbit.

Formulation

Buffer: PBS with 0.02% sodium azide, 50% glycerol, pH7.3.

Specificity

Human, Mouse, Rat

Isotype

IgG

Uniprot ID

P10415

Purification

Affinity Purification

Immunogen

A synthetic peptide of human BCL2

Storage

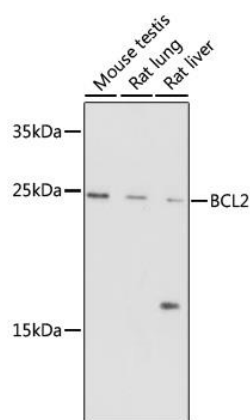
Shipped at 4°C. Upon receipt, store at -20°C. Avoid freeze / thaw cycles

Alternative Names

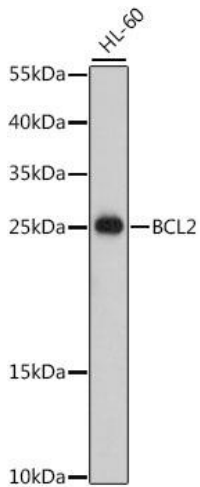
BCL2; Bcl-2; PPP1R50; apoptosis regulator Bcl-2

Application

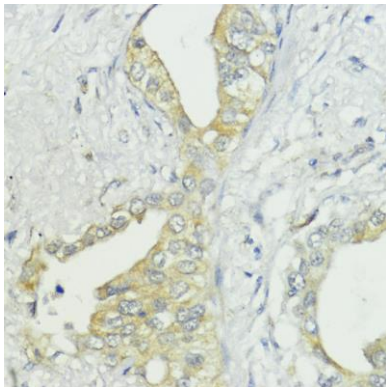
WB, IHC, IF, IP; Recommended dilution: WB 1:500 - 1:2000, IHC 1:50 - 1:100, IF/ICC 1:50 - 1:100, IP 1:50 - 1:200



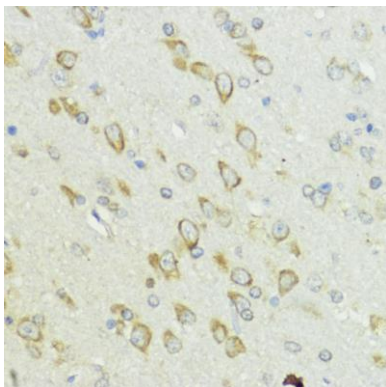
Western blot analysis of extracts of various cells, using BCL2 Polyclonal Antibody at 1:1000 dilution.
Secondary Antibody: HRP Goat Anti-Rabbit IgG (H+L) at 1:10000 dilution.
Lysates/proteins: 25ug per lane.
Blocking buffer: 3% nonfat dry milk in TBST. Exposure time: 3min.



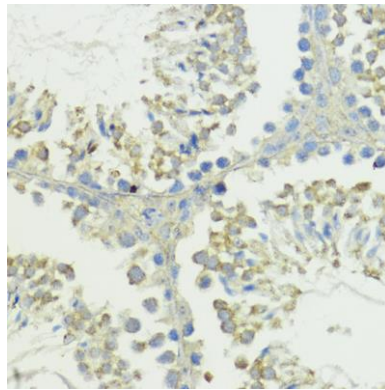
Western blot analysis of extracts of HL-60 cells, using BCL2 Polyclonal Antibody at 1:500 dilution. Secondary Antibody: HRP Goat Anti-Rabbit IgG (H+L) at 1:10000 dilution. Lysates/proteins: 25ug per lane. Blocking buffer: 3% nonfat dry milk in TBST. Exposure time: 90s.



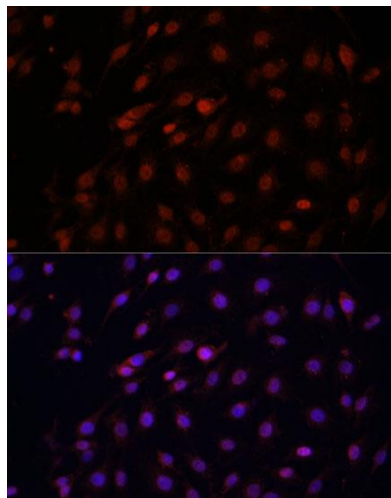
Immunohistochemistry of paraffin-embedded human lung cancer using BCL2 Polyclonal Antibody at dilution of 1:100 (40x lens).



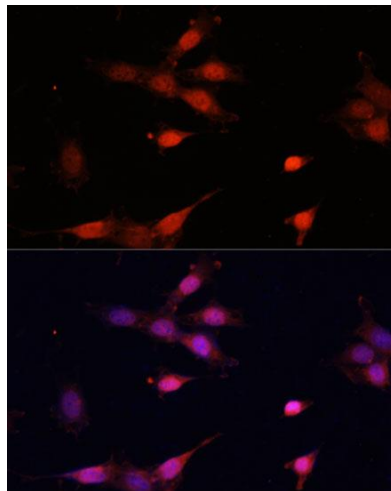
Immunohistochemistry of paraffin-embedded rat brain using BCL2 Polyclonal Antibody at dilution of 1:100 (40x lens).



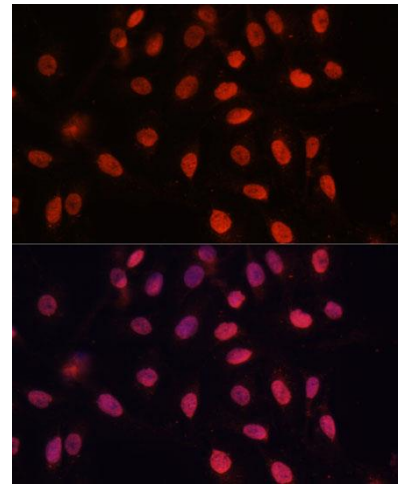
Immunohistochemistry of paraffin-embedded mouse testis using BCL2 Polyclonal Antibody at dilution of 1:100 (40x lens).



Immunofluorescence analysis of C6 cells using BCL2 Polyclonal Antibody at dilution of 1:100 (40x lens). Blue: DAPI for nuclear staining.



Immunofluorescence analysis of NIH-3T3 cells using BCL2 Polyclonal Antibody at dilution of 1:100 (40x lens). Blue: DAPI for nuclear staining.



Immunofluorescence analysis of U-2 OS cells using BCL2 Polyclonal Antibody at dilution of 1:100 (40x lens). Blue: DAPI for nuclear staining