

---

## XRCC5 Polyclonal Antibody

(Catalog # A72308)

---

### Background

The protein encoded by this gene is the 80-kilodalton subunit of the Ku heterodimer protein which is also known as ATP-dependant DNA helicase II or DNA repair protein XRCC5. Ku is the DNA-binding component of the DNA-dependent protein kinase, and it functions together with the DNA ligase IV-XRCC4 complex in the repair of DNA double-strand break by non-homologous end joining and the completion of V(D)J recombination events. This gene functionally complements Chinese hamster xrs-6, a mutant defective in DNA double-strand break repair and in ability to undergo V(D)J recombination. A rare microsatellite polymorphism in this gene is associated with cancer in patients of varying radiosensitivity.

### Description

XRCC5 Polyclonal Antibody. Unconjugated. Raised in: Rabbit.

### Formulation

Buffer: PBS with 0.02% sodium azide, 50% glycerol, pH7.3.

### Specificity

Human, Mouse, Rat

### Isotype

IgG

### Uniprot ID

P13010

### Purification

Affinity Purification

### Immunogen

Recombinant fusion protein containing a sequence corresponding to amino acids 543-732 of human XRCC5 (NP\_066964.1).

### Storage

Shipped at 4°C. Upon receipt, store at -20°C. Avoid freeze / thaw cycles

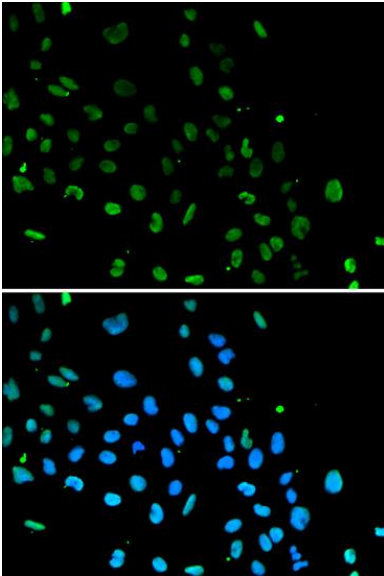
### Alternative Names

XRCC5; KARP-1; KARP1; KU80; KUB2; Ku86; NFIV; X-ray repair cross complementing 5

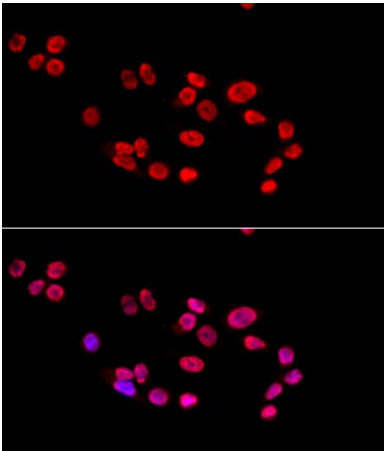
### Application

WB, IHC, IF, IP; Recommended dilution: WB 1:500 - 1:2000, IHC 1:100 - 1:200, IF 1:20 - 1:100, IP 1:50 - 1:200

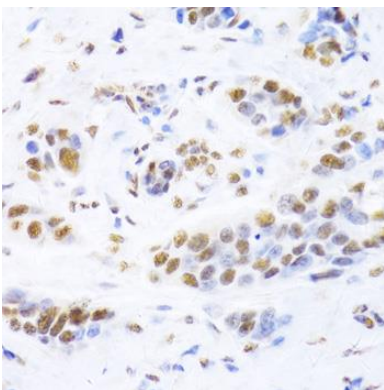
---



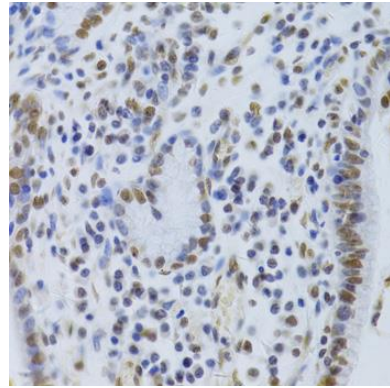
Immunofluorescence analysis of A549 cells using XRCC5 Polyclonal Antibody. Blue: DAPI for nuclear staining.



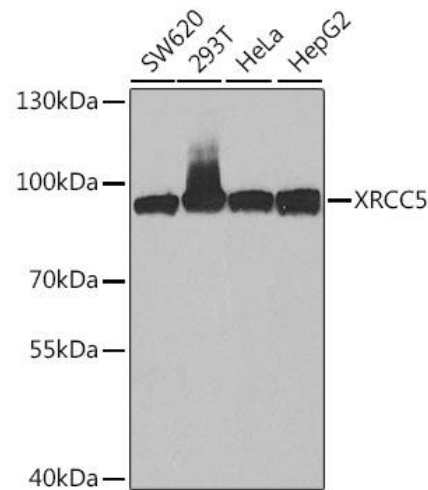
Immunofluorescence analysis of HeLa cells using XRCC5 Polyclonal Antibody at dilution of 1:100 (40x lens). Blue: DAPI for nuclear staining.



Immunohistochemistry of paraffin-embedded human breast cancer using XRCC5 Polyclonal Antibody at dilution of 1:100 (40x lens).



Immunohistochemistry of paraffin-embedded human gastric cancer using XRCC5 Polyclonal Antibody at dilution of 1:100 (40x lens).



Western blot analysis of extracts of various cell lines, using XRCC5 Polyclonal Antibody at 1:10000 dilution. Secondary antibody: HRP Goat Anti-Rabbit IgG (H+L) at 1:10000 dilution. Lysates/proteins: 25ug per lane. Blocking buffer: 3% nonfat dry milk in TBST. Exposure time: 60s.