

---

## APOB Polyclonal Antibody

(Catalog A71904)

---

### Background

This gene product is the main apolipoprotein of chylomicrons and low-density lipoproteins. It occurs in plasma as two main isoforms, apoB-48 and apoB-100: the former is synthesized exclusively in the gut and the latter in the liver. The intestinal and the hepatic forms of apoB are encoded by a single gene from a single, very long mRNA. The two isoforms share a common N-terminal sequence. The shorter apoB-48 protein is produced after RNA editing of the apoB-100 transcript at residue 2180 (CAA->UAA), resulting in the creation of a stop codon, and early translation termination. Mutations in this gene or its regulatory region cause hypobetalipoproteinemia, normotriglyceridemic hypobetalipoproteinemia, and hypercholesterolemia due to ligand-defective apoB, diseases affecting plasma cholesterol and apoB levels.

### Description

APOB Polyclonal Antibody. Unconjugated. Raised in: Rabbit.

### Formulation

Buffer: PBS with 0.05% proclin300, 50% glycerol, pH7.3.

### Specificity

Human, Mouse, Rat

### Isotype

IgG

### Uniprot ID

P04114

### Purification

Affinity Purification

### Immunogen

Recombinant fusion protein containing a sequence corresponding to amino acids 1890-2190 of human ApoB (NP\_000375.3)

### Storage

Shipped at 4°C. Upon receipt, store at -20°C. Avoid freeze / thaw cycles

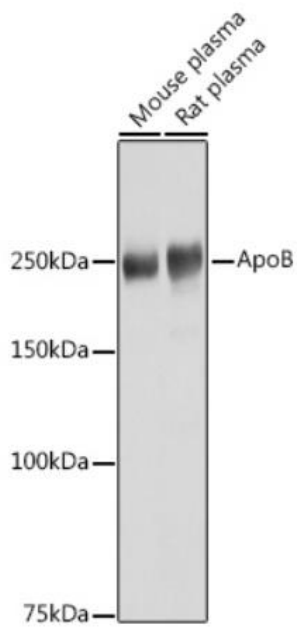
### Alternative Names

APOB; FLDB; LDLCQ4; apoB-100; apoB-48; apolipoprotein B

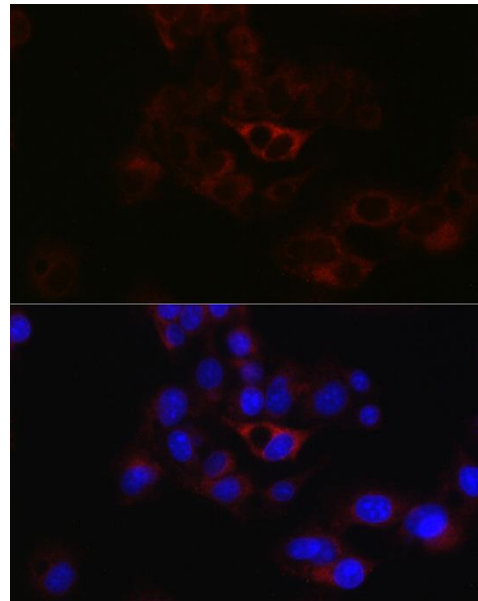
### Application

WB, IF; Recommended dilution: WB 1:500-1:2000, IF: 1:50-1:200

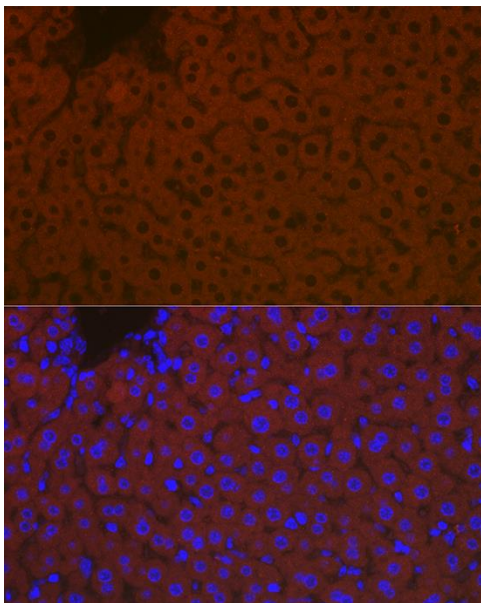
---



Western blot analysis of extracts of various cell lines, using APOB Polyclonal Antibody at 1:1000 dilution.  
 Secondary antibody: HRP Goat Anti-Rabbit IgG (H+L) at 1:10000 dilution.  
 Lysates/proteins: 25ug per lane.  
 Blocking buffer: 3% nonfat dry milk in TBST.  
 Exposure time: 1s.



Immunofluorescence analysis of HepG2 cells using APOB Polyclonal Antibody at dilution of 1:50 (40x lens). Blue: DAPI for nuclear staining.



Immunofluorescence analysis of mouse liver cells using APOB Polyclonal Antibody at dilution of 1:100 (40x lens). Blue: DAPI for nuclear staining.