
Albumin Polyclonal Antibody

(Catalog #A71857)

Background

Albumin is a soluble, monomeric protein which comprises about one-half of the blood serum protein. Albumin functions primarily as a carrier protein for steroids, fatty acids, and thyroid hormones and plays a role in stabilizing extracellular fluid volume. Albumin is a globular unglycosylated serum protein of molecular weight 65,000. Albumin is synthesized in the liver as preproalbumin which has an N-terminal peptide that is removed before the nascent protein is released from the rough endoplasmic reticulum. The product, proalbumin, is in turn cleaved in the Golgi vesicles to produce the secreted albumin.

Description

Albumin Polyclonal Antibody. Unconjugated. Raised in: Rabbit.

Formulation

Buffer: PBS with 0.02% sodium azide, 50% glycerol, pH7.3.

Specificity

Human, Mouse, Rat

Isotype

IgG

Uniprot ID

P02768

Purification

Affinity Purified

Immunogen

Recombinant fusion protein containing a sequence corresponding to amino acids 25-609 of human Albumin (NP_000468.1).

Storage

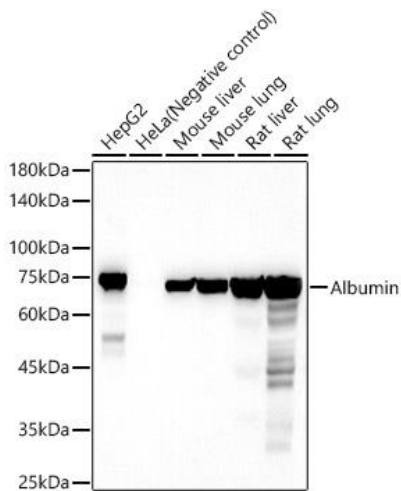
Shipped at 4°C. Upon receipt, store at -20°C. Avoid freeze / thaw cycles

Alternative Names

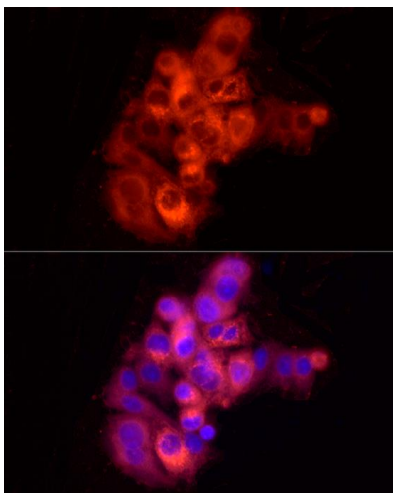
ALB; HSA; PRO0883; PRO0903; PRO1341; albumin

Application

WB, IF; Recommended dilution; WB 1:100 – 1:500, IF 1:50 – 1:200



Western blot analysis of various lysates, using Albumin Polyclonal Antibody at 1:500 dilution.
Secondary antibody: HRP Goat Anti-Rabbit IgG (H+L) at 1:10000 dilution.
Lysates/proteins: 25µg per lane.
Blocking buffer: 3% nonfat dry milk in TBST.
Exposure time: 30s.



Immunofluorescence analysis of HepG2 cells using Albumin Polyclonal Antibody at dilution of 1:100 (40x lens). Secondary antibody: Cy3 Goat Anti-Rabbit IgG (H+L) at 1:500 dilution.
Blue: DAPI for nuclear staining.