

# Albumin Polyclonal Antibody

(Catalog # A71856)

## Background

Albumin is a soluble, monomeric protein which comprises about one-half of the blood serum protein. Albumin functions primarily as a carrier protein for steroids, fatty acids, and thyroid hormones and plays a role in stabilizing extracellular fluid volume. Albumin is a globular unglycosylated serum protein of molecular weight 65,000. Albumin is synthesized in the liver as prealbumin which has an N-terminal peptide that is removed before the nascent protein is released from the rough endoplasmic reticulum. The product, proalbumin, is in turn cleaved in the Golgi vesicles to produce the secreted albumin.

## Description

Albumin Polyclonal Antibody. Unconjugated. Raised in: Rabbit.

## Formulation

Buffer: PBS with 0.02% sodium azide, 50% glycerol, pH7.3.

## Specificity

Human, Mouse, Rat

## Isotype

IgG

## Uniprot ID

P02768

## Purification

Affinity Purification

## Immunogen

Recombinant fusion protein containing a sequence corresponding to amino acids 20-255 of human Albumin (NP\_000468.1).

## Storage

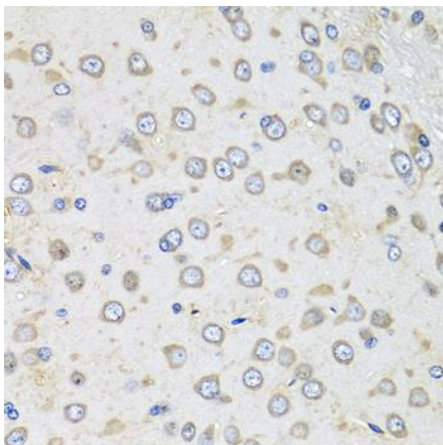
Shipped at 4°C. Upon receipt, store at -20°C. Avoid freeze / thaw cycles

## Alternative Names

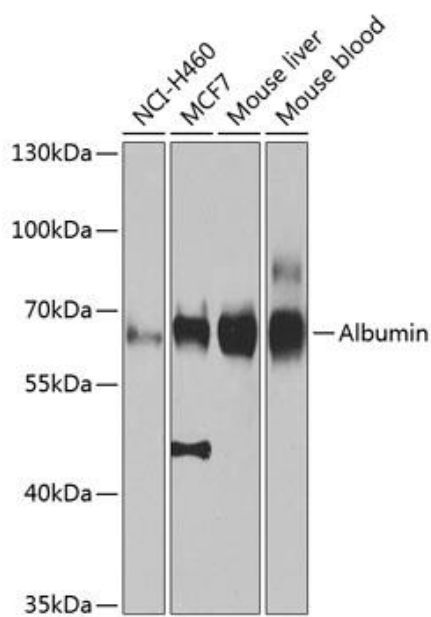
ALB; HSA; PRO0883; PRO0903; PRO1341; albumin

## Application

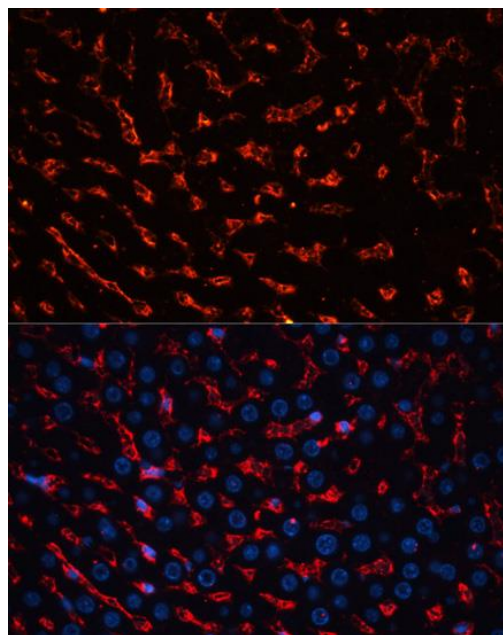
WB, IHC, IF; Recommended dilution: WB 1:500 - 1:2000, IHC 1:50 - 1:100, IF 1:50 - 1:100



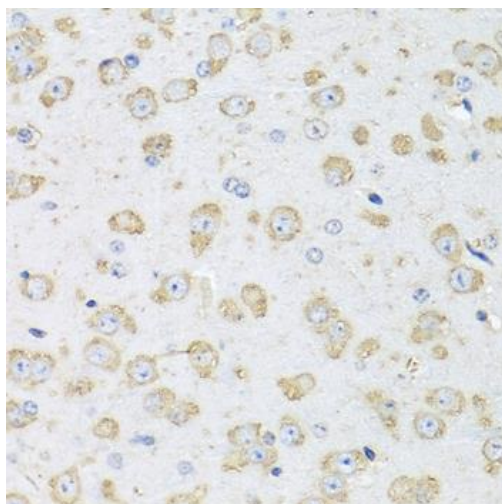
Immunohistochemistry of paraffin-embedded rat brain using Albumin Polyclonal Antibody at dilution of 1:100 (40x lens).



Western blot analysis of extracts of various cell lines, using Albumin Polyclonal Antibody at 1:1000 dilution. Secondary Antibody: HRP Goat Anti-Rabbit IgG (H+L) at 1:10000 dilution. Lysates/proteins: 25ug per lane. Blocking buffer: 3% nonfat dry milk in TBST. Exposure time: 15s.



Immunofluorescence analysis of rat liver using Albumin Polyclonal Antibody at dilution of 1:100. Blue: DAPI for nuclear staining.



Immunohistochemistry of paraffin-embedded mouse brain using Albumin Polyclonal Antibody at dilution of 1:100 (40x lens).