

EPO Polyclonal Antibody

(Catalog # A71187)

Background

This gene is a member of the EPO/TPO family and encodes a secreted, glycosylated cytokine composed of four alpha helical bundles. The protein is found in the plasma and regulates red cell production by promoting erythroid differentiation and initiating hemoglobin synthesis. This protein also has neuroprotective activity against a variety of potential brain injuries and antiapoptotic functions in several tissue types.

Description

EPO Polyclonal Antibody. Unconjugated. Raised in: Rabbit.

Formulation

Buffer: PBS with 0.05% proclin300, 50% glycerol, pH7.3.

Specificity

Human, Mouse, Rat

Isotype

IgG

Uniprot ID

P01588

Purification

Affinity Purified

Immunogen

A synthetic peptide corresponding to a sequence within amino acids 93-193 of human EPO (NP_000790.2).

Storage

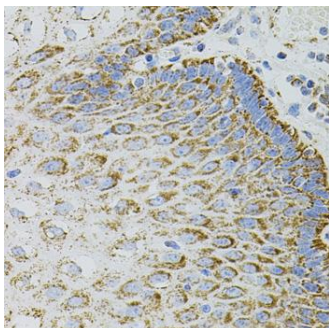
Shipped at 4°C. Upon receipt, store at -20°C. Avoid freeze / thaw cycles

Alternative Names

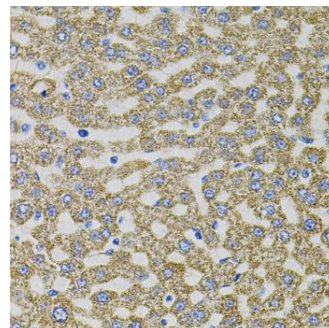
EPO; EP; MVCD2; erythropoietin

Application

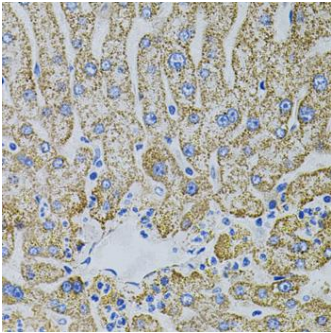
WB, IHC, IF/ICC; Recommended dilution, WB 1:500 - 1:1000, IHC-P 1:100 - 1:200, IF/ICC 1:50 - 1:200



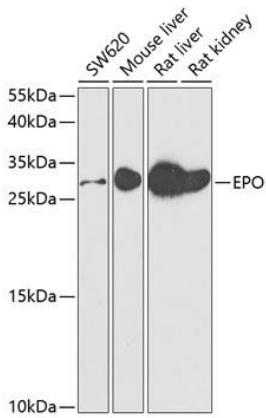
Immunohistochemistry of paraffin-embedded human esophagus using EPO Polyclonal Antibody (40x lens).



Immunohistochemistry of paraffin-embedded rat liver using EPO Polyclonal Antibody (40x lens).



Immunohistochemistry of paraffin-embedded human liver damage using EPO Polyclonal Antibody (40x lens).



Western blot analysis of extracts of various cell lines, using EPO Polyclonal Antibody at 1:500 dilution.
Secondary antibody: HRP Goat Anti-Rabbit IgG (H+L) at 1:10000 dilution.
Lysates/proteins: 25ug per lane.
Blocking buffer: 3% nonfat dry milk in TBST.