
LOXL1 Polyclonal Antibody

(Catalog # A71068)

Background

This gene encodes a member of the lysyl oxidase family of proteins. The prototypic member of the family is essential to the biogenesis of connective tissue, encoding an extracellular copper-dependent amine oxidase that catalyzes the first step in the formation of crosslinks in collagen and elastin. The encoded preproprotein is proteolytically processed to generate the mature enzyme. A highly conserved amino acid sequence at the C-terminus end appears to be sufficient for amine oxidase activity, suggesting that each family member may retain this function. The N-terminus is poorly conserved and may impart additional roles in developmental regulation, senescence, tumor suppression, cell growth control, and chemotaxis to each member of the family. Mutations in this gene are associated with exfoliation syndrome.

Description

LOXL1 Polyclonal Antibody. Unconjugated. Raised in: Rabbit.

Formulation

Buffer: PBS with 0.02% sodium azide, 50% glycerol, pH7.3.

Specificity

Human, Mouse, Rat

Isotype

IgG

Uniprot ID

Q08397

Purification

Affinity Purification

Immunogen

Recombinant fusion protein containing a sequence corresponding to amino acids 95-370 of human LOXL1 (NP_005567.2).

Storage

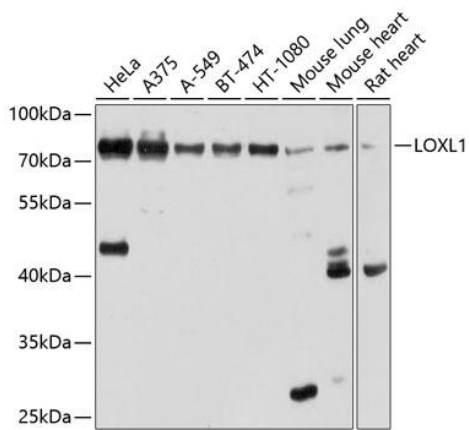
Shipped at 4°C. Upon receipt, store at -20°C. Avoid freeze / thaw cycles

Alternative Names

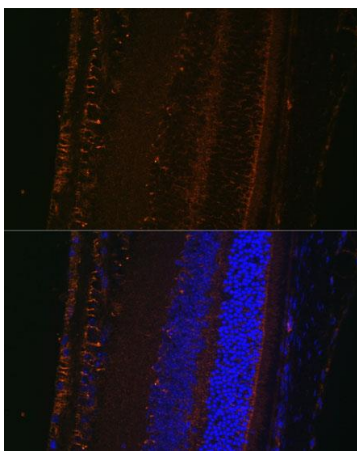
LOXL1; LOL; LOXL; lysyl oxidase like 1

Application

WB, IF; Recommended dilution: WB 1:1000 - 1:3000, IF 1:50 - 1:200



Western blot analysis of extracts of various cell lines, using LOXL1 Polyclonal Antibody at 1:1000 dilution.
 Secondary Antibody: HRP Goat Anti-Rabbit IgG (H+L) at 1:10000 dilution.
 Lysates/proteins: 25ug per lane.
 Blocking buffer: 3% nonfat dry milk in TBST.
 Exposure time: 5s



Immunofluorescence analysis of mouse eye using LOXL1 Polyclonal Antibody at dilution of 1:100 (40x lens). Blue: DAPI for nuclear staining.