
KRAS Polyclonal Antibody

(Catalog # A70886)

Background

This gene, a Kirsten ras oncogene homolog from the mammalian ras gene family, encodes a protein that is a member of the small GTPase superfamily. A single amino acid substitution is responsible for an activating mutation. The transforming protein that results is implicated in various malignancies, including lung adenocarcinoma, mucinous adenoma, ductal carcinoma of the pancreas and colorectal carcinoma. Alternative splicing leads to variants encoding two isoforms that differ in the C-terminal region.

Description

KRAS Polyclonal Antibody. Unconjugated. Raised in: Rabbit.

Formulation

Buffer: PBS with 0.02% sodium azide, 50% glycerol, pH7.3.

Specificity

Human, Mouse, Rat

Isotype

IgG

Uniprot ID

P01116

Purification

Affinity Purification

Immunogen

Recombinant protein of human KRAS

Storage

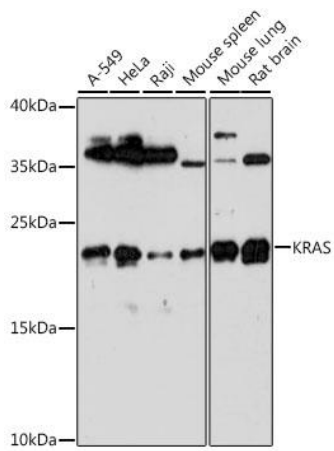
Shipped at 4°C. Upon receipt, store at -20°C. Avoid freeze / thaw cycles

Alternative Names

KRAS; C-K-RAS; CFC2; K-RAS2A; K-RAS2B; K-RAS4A; K-RAS4B; KI-RAS; KRAS1; KRAS2; NS; NS3; RALD; RASK2; c-Ki-ras2; GTPase KRas

Application

WB, IHC, IF



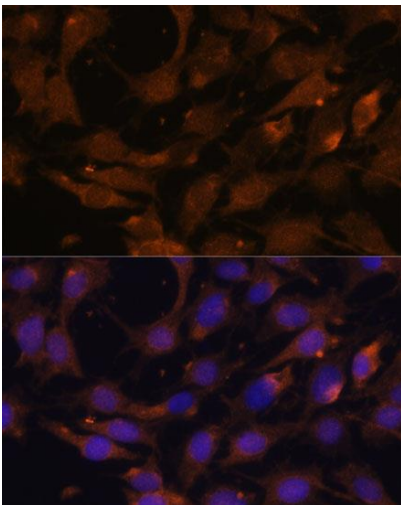
Western blot analysis of extracts of various cell lines, using KRAS Polyclonal Antibody at 1:1000 dilution.

Secondary Antibody: HRP Goat Anti-Rabbit IgG (H+L) at 1:10000 dilution.

Lysates/proteins: 25ug per lane.

Blocking buffer: 3% nonfat dry milk in TBST.

Exposure time: 90s.



Immunofluorescence analysis of C6 cells using KRAS Polyclonal Antibody at dilution of 1:100. Blue: DAPI for nuclear staining.