
Caspase 1 Polyclonal Antibody

(Catalog # A70797)

Background

This gene encodes a protein which is a member of the cysteine-aspartic acid protease (caspase) family. Sequential activation of caspases plays a central role in the execution-phase of cell apoptosis. Caspases exist as inactive proenzymes which undergo proteolytic processing at conserved aspartic residues to produce 2 subunits, large and small, that dimerize to form the active enzyme. This gene was identified by its ability to proteolytically cleave and activate the inactive precursor of interleukin-1, a cytokine involved in the processes such as inflammation, septic shock, and wound healing. This gene has been shown to induce cell apoptosis and may function in various developmental stages. Studies of a similar gene in mouse suggest a role in the pathogenesis of Huntington disease. Alternative splicing results in transcript variants encoding distinct isoforms.

Description

Caspase 1 Polyclonal Antibody. Unconjugated. Raised in: Rabbit.

Formulation

Buffer: PBS with 0.01% thimerosal, 50% glycerol, pH7.3.

Specificity

Human, Mouse, Rat

Isotype

IgG

Uniprot ID

P29466

Purification

Affinity Purification

Immunogen

Recombinant fusion protein containing a sequence corresponding to amino acids 1-311 of human Caspase 1 (NP_150635.1).

Storage

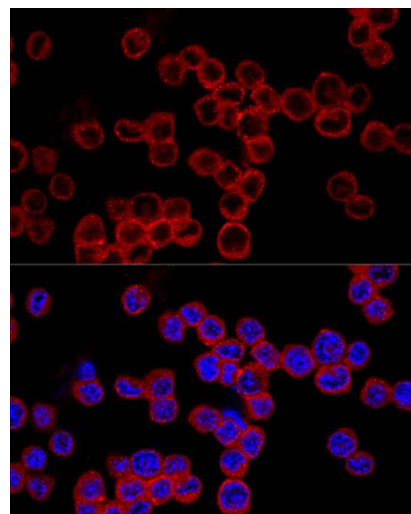
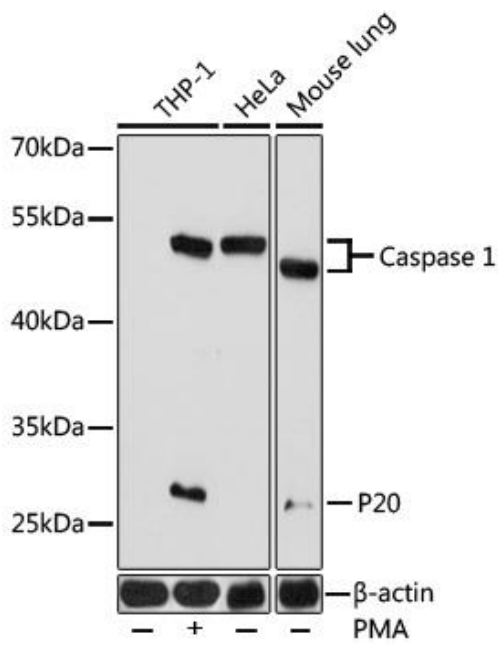
Shipped at 4°C. Upon receipt, store at -20°C. Avoid freeze / thaw cycles

Alternative Names

CASP1; ICE; IL1BC; P45; caspase-1

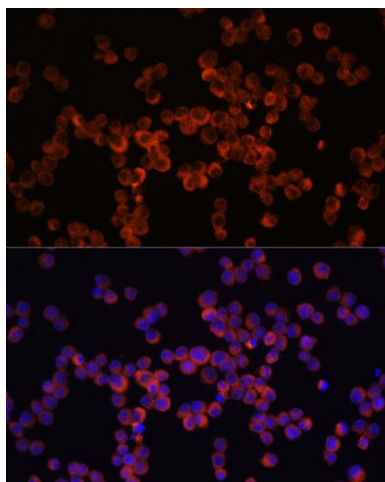
Application

WB, IF/ICC; Recommended dilution, WB 1:1000 - 1:5000, IF/ICC 1:50 - 1:200



Confocal immunofluorescence analysis of Raw264.7 cells using Caspase 1 Polyclonal Antibody at dilution of 1:200. Blue: DAPI for nuclear staining.

Western blot analysis of extracts of various cell lines, using Caspase 1 Polyclonal Antibody at 1:1000 dilution. Secondary Antibody: HRP Goat Anti-Rabbit IgG (H+L) at 1:10000 dilution. Lysates/proteins: 25ug per lane. Blocking buffer: 3% nonfat dry milk in TBST. Exposure time: 90s.



Immunofluorescence analysis of Raw264.7 cells using Caspase 1 Polyclonal Antibody at dilution of 1:100 (40x lens). Blue: DAPI for nuclear staining.