

---

# KAT2B Polyclonal Antibody

(Catalog # A70428)

---

## Background

CBP and p300 are large nuclear proteins that bind to many sequence-specific factors involved in cell growth and/or differentiation, including c-jun and the adenoviral oncoprotein E1A. The protein encoded by this gene associates with p300/CBP. It has in vitro and in vivo binding activity with CBP and p300, and competes with E1A for binding sites in p300/CBP. It has histone acetyl transferase activity with core histones and nucleosome core particles, indicating that this protein plays a direct role in transcriptional regulation.

## Description

KAT2B Polyclonal Antibody. Unconjugated. Raised in: Rabbit.

## Formulation

Buffer: PBS with 0.02% sodium azide, 50% glycerol, pH7.3.

## Specificity

Human, Mouse, Rat

## Isotype

IgG

## Uniprot ID

Q92831

## Purification

Affinity Purification

## Immunogen

Recombinant fusion protein containing a sequence corresponding to amino acids 583-832 of human KAT2B (NP\_003875.3).

## Storage

Shipped at 4°C. Upon receipt, store at -20°C. Avoid freeze / thaw cycles

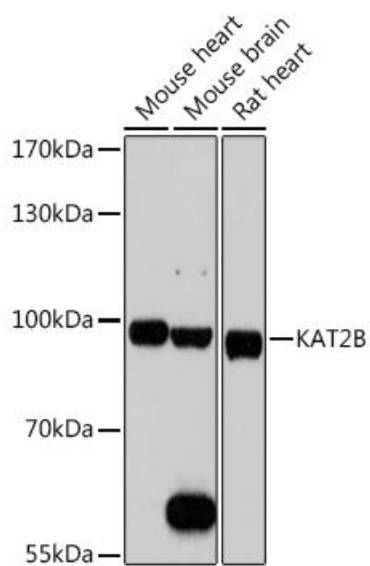
## Alternative Names

KAT2B; CAF; P/CAF; PCAF; lysine acetyltransferase 2B

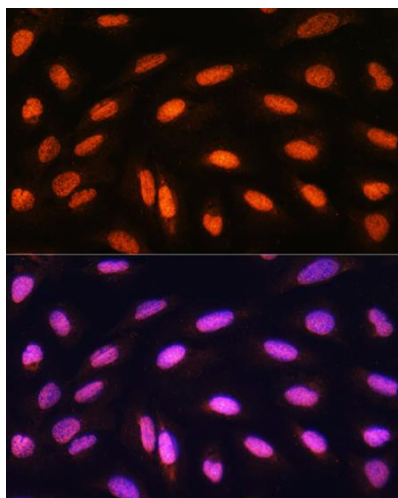
## Application

WB, IF; Recommended dilution: WB: 1:500-1:2000, IF: 1:50-1:200

---



Western blot analysis of extracts of various cell lines, using KAT2B Polyclonal Antibody at 1:1000 dilution.  
Secondary Antibody: HRP Goat Anti-Rabbit IgG (H+L) at 1:10000 dilution.  
Lysates/proteins: 25ug per lane.  
Blocking buffer: 3% nonfat dry milk in TBST.  
Exposure time: 90s.



Immunofluorescence analysis of U2OS cells using KAT2B Polyclonal Antibody at dilution of 1:100. Blue: DAPI for nuclear staining.