

ACLY Polyclonal Antibody

(Catalog # A62042)

Background

ATP-citrate synthase is the primary enzyme responsible for the synthesis of cytosolic acetyl-CoA in many tissues. Has a central role in de novo lipid synthesis. In nervous tissue it may be involved in the biosynthesis of acetylcholine.

Description

ACLY Polyclonal Antibody. Unconjugated. Raised in: Rabbit.

Formulation

0.03% Proclin 300. 50% Glycerol, 0.01M PBS, pH 7.4.

Specificity

Human

Isotype

IgG

Uniprot ID

P53396

Purification

Protein G purified

Immunogen

Recombinant Human ATP-citrate synthase protein (4-265AA)

Storage

Shipped at 4°C. Upon delivery aliquot and store at -20°C (short-term) or -80°C (long-term). Avoid repeated freeze.

Alternative Names

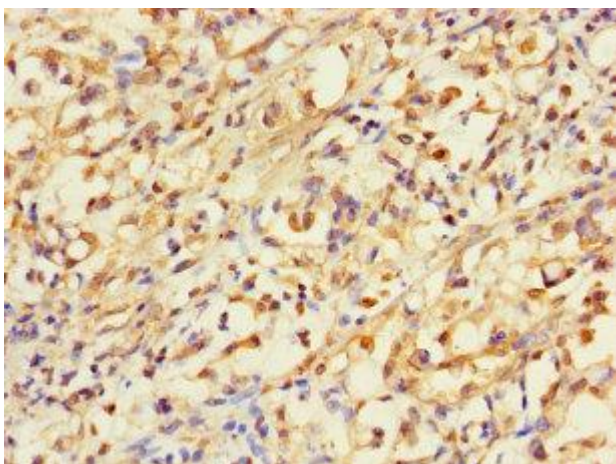
ATP-citrate synthase, ATP-citrate (pro-S)-lyase, ACL, Citrate cleavage enzyme, ACLY

Application

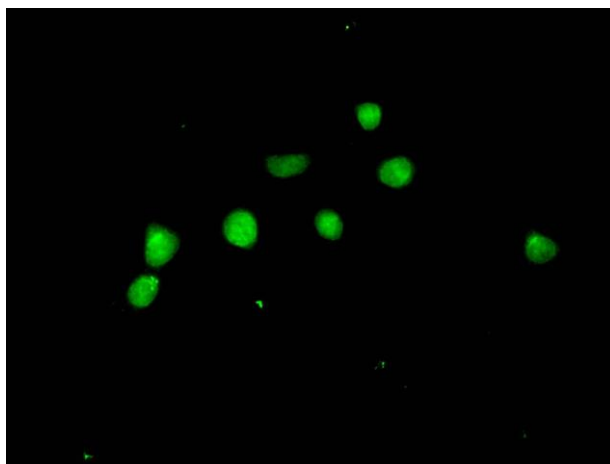
ELISA, WB, IHC, IF; Recommended dilution: WB:1:500-1:5000, IHC:1:20-1:200, IF:1:50-1:200



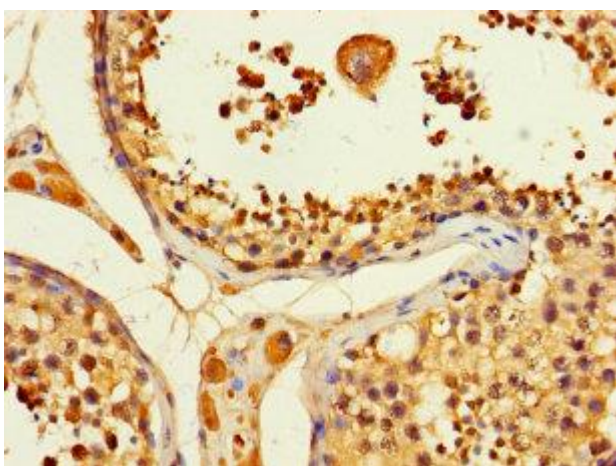
Immunohistochemistry of paraffin-embedded human breast cancer at dilution of 1:100



Immunohistochemistry of paraffin-embedded human gastric cancer at dilution of 1:100



Immunofluorescent analysis of HepG2 cells at a dilution of 1:100 and Alexa Fluor 488-conjugated AffiniPure Goat Anti-Rabbit IgG(H+L)



Immunohistochemistry of paraffin-embedded human testis tissue at dilution of 1:100