

## igg Heavy Chain Polyclonal Antibody

(Catalog # A57584)

### Background

The basic structure of IgG molecule is composed of four polypeptide chains, that is, from the same two small molecular weight peptides (referred to as light chain, Light chain, L chain, the relative molecular mass of about 25,000) and two identical large molecular weight peptides (called heavy chain, heavy chain, H Chain, relative molecular mass of about 55,000) composed. A natural two heavy chains of IgG molecules are always the same. The goat IgG antibodies can specifically recognize the heavy Chain.

### Description

igg Heavy Chain Polyclonal Antibody. Unconjugated. Raised in: Guinea pig.

### Formulation

Liquid. 0.03% Proclin 300, 50% Glycerol, 0.01M PBS, PH 7.4.

### Specificity

Goat

### Isotype

IgG

### Purification

>95%, Protein G purified

### Immunogen

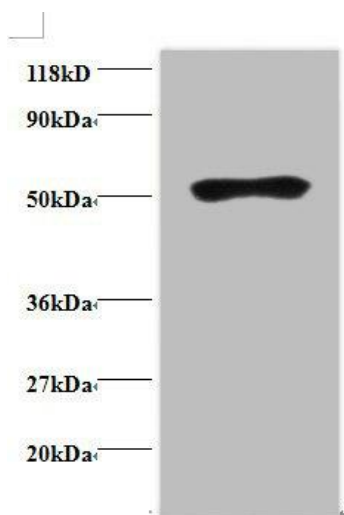
Goat IgG heavy chain (Native Protein)

### Storage

Shipped at 4°C. Upon delivery aliquot and store at -20°C (short-term) or -80°C (long-term). Avoid repeated freeze.

### Application

ELISA, WB; Recommended dilution: WB:1:1000-1:5000



### Western blot

All lanes: igg Heavy Chain Polyclonal Antibody at 2ug/ml+goat seruma

Lane 1: goat serum at 1:100a

Lane 2: goat serum at 1:1000a

Secondary

Rabbit polyclonal to Guinea pig IgG at 1/15000 dilution

Predicted band size: 55 kDa

Observed band size: 50kDa