

## APOA1 Polyclonal Antibody

(Catalog # A55259)

### Background

Participates in the reverse transport of cholesterol from tissues to the liver for excretion by promoting cholesterol efflux from tissues and by acting as a cofactor for the lecithin cholesterol acyltransferase (LCAT). As part of the SPAP complex, activates spermatozoa motility.

### Description

APOA1 Polyclonal Antibody. Unconjugated. Raised in: Rabbit.

### Formulation

Liquid. 0.03% Proclin 300. 50% Glycerol, 0.01M PBS, pH 7.4.

### Specificity

Bovine, Rat, Mouse

### Isotype

IgG

### Uniprot ID

P15497

### Purification

Protein G purified

### Immunogen

Recombinant Bovine Apolipoprotein A-I protein (25-265AA)

### Storage

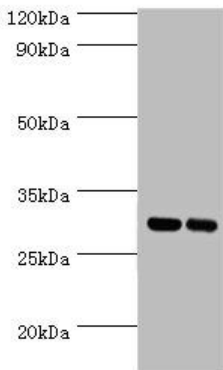
Shipped at 4°C. Upon delivery aliquot and store at -20°C (short-term) or -80°C (long-term). Avoid repeated freeze.

### Alternative Names

Apo-AI, ApoA-I, Apolipoprotein A1, APOA1

### Application

ELISA, WB; Recommended dilution: WB:1:1000-1:5000



#### Western blot

All lanes: APOA1 Polyclonal Antibody at 2ug/ml

Lane 1: mouse liver tissue

Lane 2: mouse lung tissue

Secondary

Goat polyclonal to rabbit at 1/10000 dilution

Predicted band size: 30kDa

Observed band size: 30kDa