

KLRC2 Polyclonal Antibody

(Catalog # A50326)

Background

Plays a role as a receptor for the recognition of MHC class I HLA-E molecules by NK cells and some cytotoxic T-cells.

Description

KLRC2 Polyclonal Antibody. Unconjugated. Raised in: Rabbit.

Formulation

Liquid. 0.03% Proclin 300, 50% Glycerol, 0.01M PBS, PH 7.4.

Specificity

Human

Isotype

IgG

Uniprot ID

P26717

Purification

>95%, Protein G purified

Immunogen

Recombinant Human NKG2-C type II integral membrane protein (94-231AA)

Storage

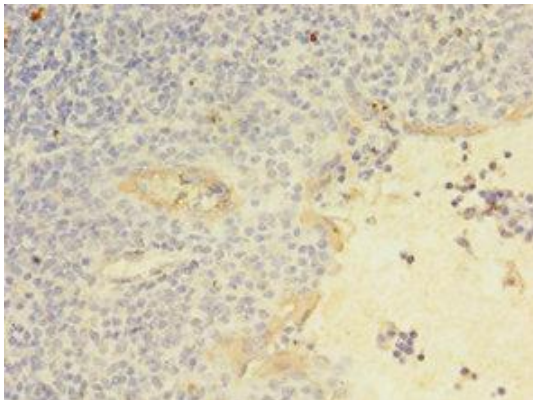
Shipped at 4°C. Upon delivery aliquot and store at -20°C (short-term) or -80°C (long-term). Avoid repeated freeze.

Alternative Names

CD159 antigen-like family member C, NK cell receptor C, NKG2-C-activating NK receptor, CD159c, NKG2C, KLRC2

Application

ELISA, IHC; Recommended dilution: IHC:1:20-1:200



Immunohistochemistry of paraffin-embedded human tonsil tissue at dilution 1:100