

Proteasome 19S Rpt1/S7 subunit Monoclonal Antibody [MSS1104]

(Cat. No. A-8468)

Background

Widely recognized as the central enzyme of non-lysosomal protein degradation, the proteasome is responsible for intracellular protein turnover and is also involved in many regulatory processes and, in higher eukaryotes, in antigen processing. The 26S proteasome is the main enzyme of the ubiquitin/ATP-dependent pathway of protein degradation. The catalytic core of this large complex is formed by the 20S proteasome which is comprised of four rings, each containing seven distinct and specialized subunits. The outer rings comprise the α -subunits (structural in nature) and the inner rings comprise the β -subunits (catalytic in nature). There are seven different subunits sequences positioned within each α and β rings. The 26S complex also contains over twenty additional proteins located in the PA700 proteasome activator or 19S regulatory complex. This complex determines substrate specificity and supplies the various enzymatic functions needed for proteolysis and viability. The 19S regulator complex in eukaryotes is made up of a 9-subunit base that binds directly to the α ring of the 20S core particle, and a 10-subunit lid. Six of the nine base proteins are ATPase subunits from the AAA family of proteins.

Description

Mouse monoclonal antibody to Proteasome 19S Rpt1/S7 subunit, Clone MSS1104

Formulation

Liquid. In TRIS buffer containing 10mM sodium azide

Immunogen

Recombinant human Rpt1 protein

Specificity

Human, Mouse

Isotype

IgG1

Purification

Purified

Storage

Store at -20°C. Avoid multiple freeze/thaw cycles

Application

WB

Ordering Information

Products

Proteasome 19S Rpt1/S7 subunit
Monoclonal Antibody [MSS1104]

Size

25 μ l
100 μ l

Cat. No.

A-8468-025
A-8468-100

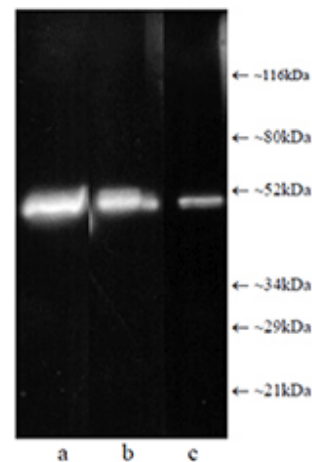


Fig. 1. Western blot analysis: Composite luminograph of (a) HeLa S3 cytosolic preparation, (b) purified 26S proteasome, and (c) human placental proteasome fraction after SDS PAGE followed by blotting onto PVDF membrane and probing with Proteasome 19S Rpt1/S7 subunit Monoclonal Antibody [MSS1104]. Antibody dilution 1:5000 using ECL procedure (1 min exposure).