

# Polyubiquitin Monoclonal Antibody [HWA4C4]

(Catalog No. A-8408)

## Background:

Modification of proteins by addition of K63-linked polyubiquitin chains is implicated in a variety of cellular events, including DNA repair, signal transduction and receptor endocytosis.

## Description:

Mouse monoclonal antibody to Polyubiquitin. Clone HWA4C4.

## Formulation:

Liquid. In PBS containing 0.09% sodium azide.

## Immunogen:

Synthetic peptide containing the ubiquitin K63-isopeptide motif.

## Specificity:

Predicted to react with a wide range of species.

## Isotype:

IgG2a

## Purification:

Serum

## Storage:

Store at -20°C. Avoid multiple freeze/thaw cycles.

## Application:

ELISA

Immunocytochemistry: (1:100)

Immunohistochemistry: (1:100)

Western Blot: (1:500 - 1:1000)

## Ordering Information

### Products

Polyubiquitin Monoclonal Antibody [HWA4C4]

### Size

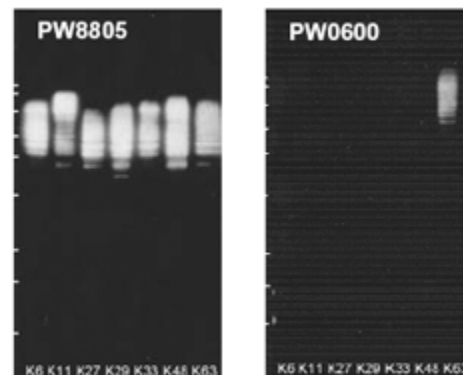
25 µl

100 µl

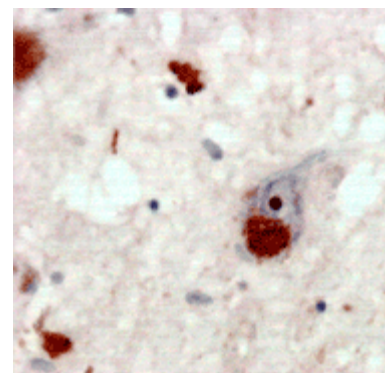
### Cat. No.

A-8408-025

A-8408-100



**Fig1:** Western blot of single isopeptide-linkage polyubiquitinylated conjugates K6, K11, K27, K29, K33, K48, K63, 1µg each, using Polyubiquitinylated Conjugates (FK1) Monoclonal Antibody and Polyubiquitin Monoclonal Antibody [HWA4C4] at 1:1000 dilution.



**Fig2:** Formalin-fixed paraffin-embedded sections of hippocampus from human Alzheimer's disease brain stained with Polyubiquitin Monoclonal Antibody [HWA4C4] at 1:100 dilution with biotinylated secondary antibody and DAB detection.

*This product is for research purposes only. Not intended for use in diagnostic procedures.*