

Erk1/2 Polyclonal Antibody

(Catalog No. A-7406)

Background

Extracellular signal-regulated protein kinases 1 and 2 (Erk1/2) belong to the mitogen-activated protein kinase (MAPK) super family associated with cell proliferation and apoptosis. Erk1/2 may be activated by a variety of extracellular stimuli including mitogen, growth factors, and cytokines. After Erks have been activated, they will proceed to phosphorylate several other downstream molecules that are involved in a range of cell activities. The MAPK signaling pathway is a frequent target for oncology-related drug development.

Description

Rabbit polyclonal antibody to Erk1/2

Formulation

Liquid. In PBS containing 50% glycerol and 0.09% sodium azide.

Immunogen

Synthetic peptide corresponding to a portion of rat Erk1. The sequence is completely conserved in hamster.

Concentration

1 mg/ml

Specificity

Human, Mouse, Rat, Bovine, Sheep, Chicken, Drosophila, Xenopus

Purification

Protein A-affinity purified

Storage

Store at -20°C. Avoid multiple freeze/thaw cycles.

Application

FC (10 µg/ml), IHC (1:50), IP, WB (1:1000, colorimetric)

Ordering Information

Products

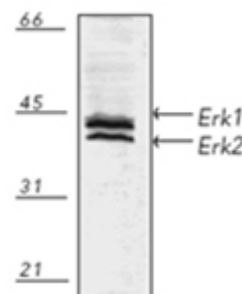
Erk1/2 Polyclonal Antibody

Size

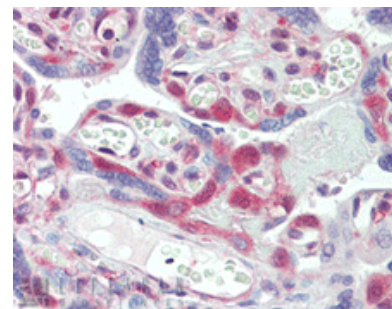
200 µg

Cat. No.

A-7406-200



▲ **Fig. 1.** Western blot analysis of human A431 fibroblast cell lysate, probed with Erk1/2 Polyclonal Antibody.



▲ **Fig. 2.** Immunohistochemistry analysis: Human placenta tissue stained with Erk1/2 Polyclonal Antibody at 10µg/ml.

This product is for research purposes only. Not intended for use in diagnostic procedures.