

## GAS2 Monoclonal Antibody [4E11]

[Catalog No. A-6218-100]

### Description

Mouse monoclonal antibody raised against a partial recombinant GAS2, clone 4E11.

### Size

100 µg

### Purification

Protein A purified

### Immunogen

GAS2 (NP\_005247, 1 a.a. ~ 111 a.a) partial recombinant protein with GST tag. MW of the GST tag alone is 26 KDa.

### Cross Reactivity

Human, Mouse

### Isotype

IgG2a Kappa

### Formulation

In 1x PBS, pH 7.2

### Storage

Aliquot and store at -20°C or lower. Avoid repeated freezing and thawing. Multiple freeze/thaw cycles may result in decreased performance. Non-hazardous. No MSDS necessary.

### Handling Recommendations

For maximum recovery of the products, centrifuge the vial prior to opening the cap.

### Applications & Suggested Dilutions\*

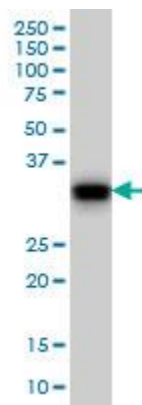
Western Blot: 0.5-1 µg/ml

ELISA: 0.25-1 µg/ml

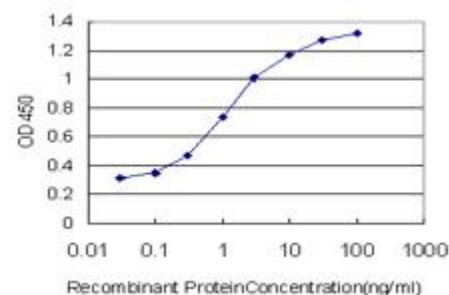
Immunofluorescence: 5 µg/ml

*\*The end user is responsible for determining optimal working dilutions.*

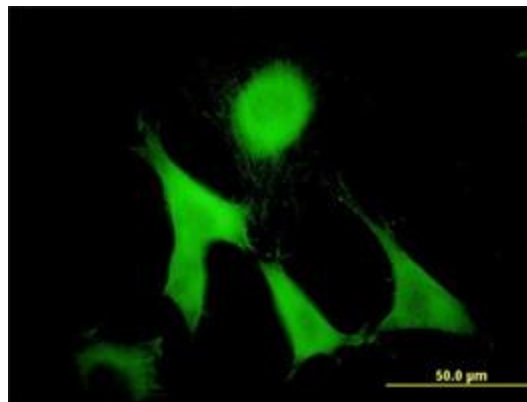
### Data



GAS2 Monoclonal Antibody, clone 4E11. Western Blot analysis of GAS2 expression in NIH/3T3.



Detection limit for recombinant GST tagged GAS2 is approximately 0.03 ng/ml as a capture antibody.



Immunofluorescence of monoclonal antibody to GAS2 on NIH/3T3 cell. [Antibody Concentration: 10 µg/ml]

*This product is for research purposes only. Not intended for use in diagnostic procedures.*