

SAP18 Polyclonal Antibody

(Catalog #A-4018)

Background

SAP18 is a member of the histone deacetylase complex. This complex consists of SIN3, SAP30, HDAC1, HDAC2, RbAp46, RbAp48, and other polypeptides. It can interact directly with SIN3 and, when joined to the promoter, can enhance SIN3 mediated transcription repression. Spliced variants of this gene exists and are associated in apoptotic cycles.

Description

SAP18 Polyclonal Antibody. Unconjugated. Raised in: Rabbit.

Formulation

Liquid. PBS with 0.02% sodium azide, 50% glycerol, pH7.3.

Specificity

Human

Isotype

IgG

Uniprot ID

O00422

Purification

Affinity purified

Immunogen

Recombinant Human Histone deacetylase complex subunit SAP18 protein (2-153AA)

Storage

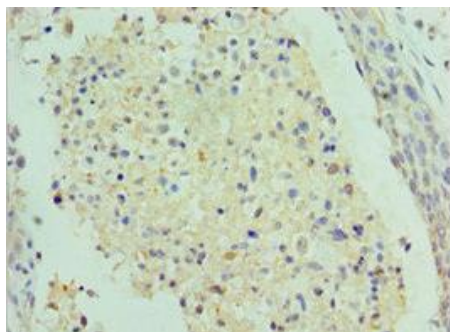
Shipped at 4°C (Blue Ice). Store at -20°C or -80°C. Avoid repeated freeze.

Alternative Names

Histone deacetylase complex subunit SAP18 (18 kDa Sin3-associated polypeptide) (2HOR0202) (Cell growth-inhibiting gene 38 protein) (Sin3-associated polypeptide p18), SAP18

Application

ELISA, IHC; Recommended dilution: IHC:1:20-1:200



Immunohistochemistry of paraffin-embedded human cervical cancer using SAP18 Antibody at dilution of 1:100