
HAT1 Polyclonal Antibody

(Catalog # A-4014)

Background

The protein encoded by this gene is a type B histone acetyltransferase (HAT) that is involved in the rapid acetylation of newly synthesized cytoplasmic histones, which are in turn imported into the nucleus for de novo deposition onto nascent DNA chains. Histone acetylation, particularly of histone H4, plays an important role in replication-dependent chromatin assembly. Specifically, this HAT can acetylate soluble but not nucleosomal histone H4 at lysines 5 and 12, and to a lesser degree, histone H2A at lysine 5. Alternatively spliced transcript variants have been identified for this gene.

Description

HAT1 Polyclonal Antibody. Unconjugated. Raised in: Rabbit.

Formulation

PBS with 0.02% sodium azide, 50% glycerol, pH7.3.

Specificity

Mouse, Rat, Human

Isotype

IgG

Uniprot ID

O14929

Purification

Affinity Purified

Immunogen

Recombinant fusion protein containing a sequence corresponding to amino acids 245-419 of human KAT1/KAT1/HAT1 (NP_003633.1)

Storage

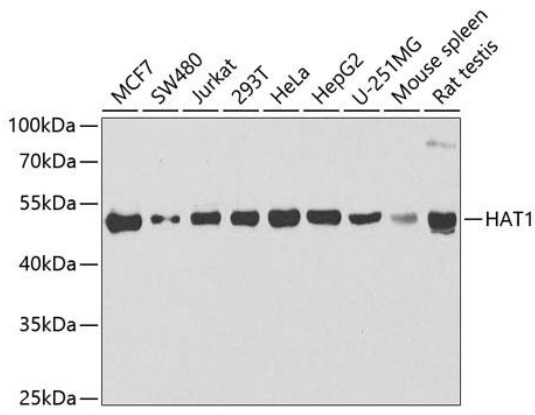
Shipped at 4°C. Upon receipt, store at -20°C. Avoid repeated freeze.

Alternative Names

Histidine aminotransferase 1 antibody, Histone acetyltransferase 1 antibody, Histone acetyltransferase type B catalytic subunit antibody, KAT1 antibody, KAT1

Application

WB, IF, ChIP; Recommended dilution: WB 1:500 - 1:2000, IF 1:50 - 1:200, ChIP 1:50 - 1:200



Western blot analysis of extracts of various cell lines, using HAT1 antibody at 1:1000 dilution.

Secondary antibody: HRP Goat Anti-Rabbit IgG (H+L) at 1:10000 dilution.

Lysates/proteins: 25ug per lane.

Blocking buffer: 3% nonfat dry milk in TBST.