

MLL5 Polyclonal Antibody

(Catalog # A-3726)

Background

This gene is a member of the myeloid/lymphoid or mixed-lineage leukemia (MLL) family and encodes a protein with an N-terminal PHD zinc finger and a central SET domain. Overexpression of the protein inhibits cell cycle progression. Alternate transcriptional splice variants have been characterized.

Description

MLL5 Polyclonal Antibody. Unconjugated. Raised in: Rabbit.

Formulation

Buffer: PBS with 0.02% sodium azide, 50% glycerol, pH7.3.

Specificity

Human, Mouse, Rat

Isotype

IgG

Uniprot ID

Q8IZD2

Purification

Affinity Purification

Immunogen

Recombinant fusion protein containing a sequence corresponding to amino acids 200-500 of human KMT2E (NP_061152.3).

Storage

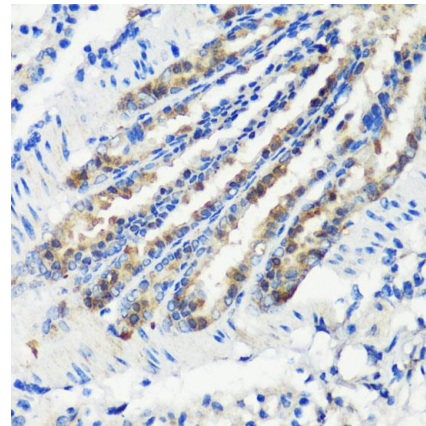
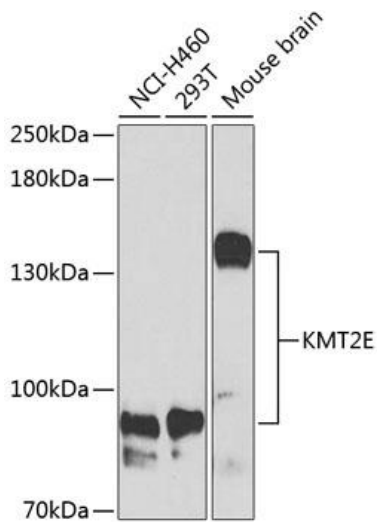
Shipped at 4°C. Upon receipt, store at -20°C. Avoid freeze / thaw cycles

Alternative Names

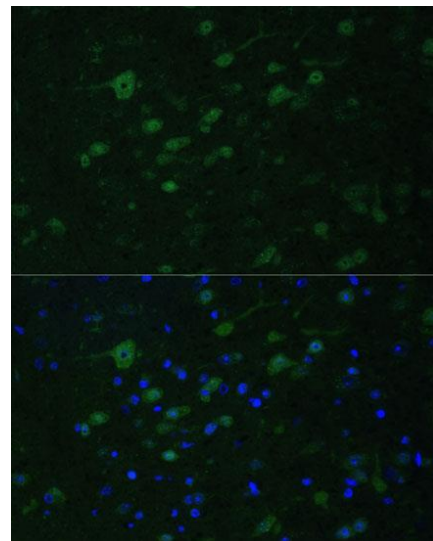
MLL5, NKp44L, HDCMC04P, KMT2E

Application

WB, IHC, IF; Recommended dilution: WB: 1:500-1:2000, IHC: 1:50-1:200, IF:1:50-1:200

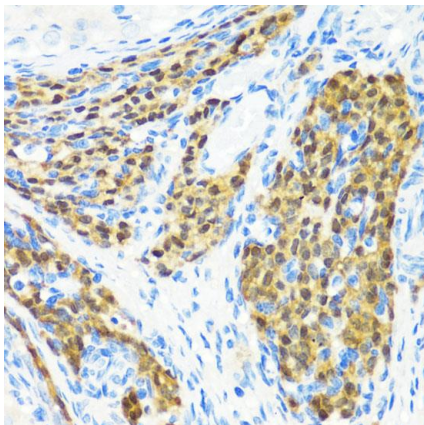


Immunohistochemistry of paraffin-embedded mouse lung using MLL5 Polyclonal Antibody at dilution of 1:200 (40x lens).

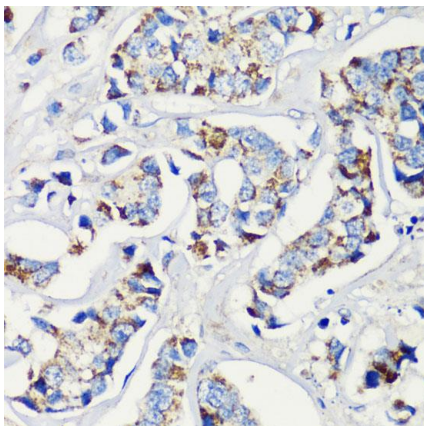


Immunofluorescence analysis of mouse brain using MLL5 Polyclonal Antibody at dilution of 1:100. Blue: DAPI for nuclear staining.

Western blot analysis of extracts of various cell lines, using MLL5 (KMT2E) Polyclonal Antibody at 1:1000 dilution.
 Secondary antibody: HRP Goat Anti-Rabbit IgG (H+L) at 1:10000 dilution.
 Lysates/proteins: 25ug per lane.
 Blocking buffer: 3% nonfat dry milk in TBST.



Immunohistochemistry of paraffin-embedded rat ovary using MLL5 Polyclonal Antibody at dilution of 1:200 (40x lens).



Immunohistochemistry of paraffin-embedded human breast cancer using MLL5 Polyclonal Antibody at dilution of 1:200 (40x lens).