

## Histone H3R17 Dimethyl Asymmetric (H3R17me2a) Polyclonal Antibody

(Catalog A-3709)

### Description

Histone H3R17 Dimethyl Asymmetric (H3R17me2a) Polyclonal Antibody. Unconjugated. Raised in: Rabbit.

### Formulation

Buffer: PBS with 0.05% proclin300, 50% glycerol, pH7.3.

### Specificity

Human, Mouse, Rat, Broad Range

### Isotype

IgG

### Uniprot ID

P68431

### Purification

Affinity Purified

### Immunogen

A synthetic asymmetric dimethylated peptide around R17 of human histone H3 (NP\_003520.1)

### Storage

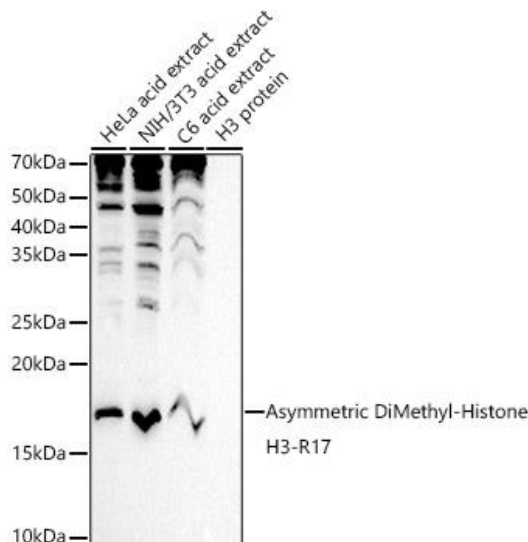
Shipped at 4°C. Upon receipt, store at -20°C. Avoid repeated freeze.

### Alternative Names

H3R17me2a, HIST1H3J, H3/j , H3FJ , Histone H3.1, Histone H3/a, Histone H3/b, Histone H3/c, Histone H3/d, Histone H3/f, Histone H3/h , Histone H3/l, Histone H3/j , Histone H3/k, Histone H3/l, H3 Arginine 17 me2a

### Application

WB, IF, IP; Recommended dilution: WB 1:500 - 1:2000, IF 1:50 - 1:200, IP 1:50 - 1:200

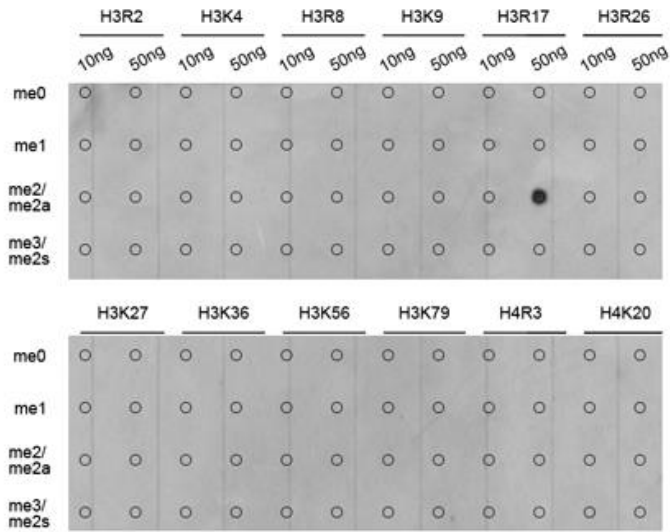


Western blot analysis of extracts of various cell lines, using Histone H3R17 Dimethyl Asymmetric (H3R17me2a) Polyclonal Antibody at 1:1000 dilution.

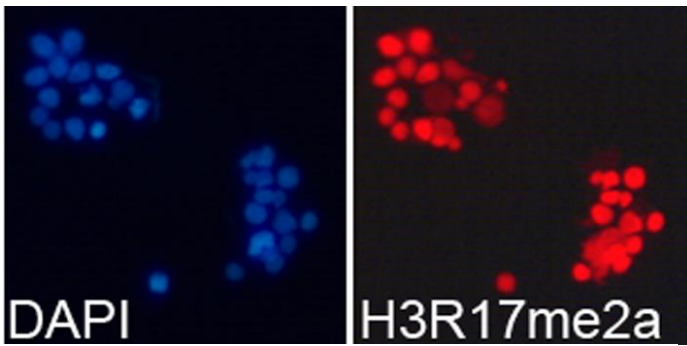
Secondary antibody: HRP Goat Anti-Rabbit IgG (H+L) at 1:10000 dilution.

Lysates/proteins: 25ug per lane.

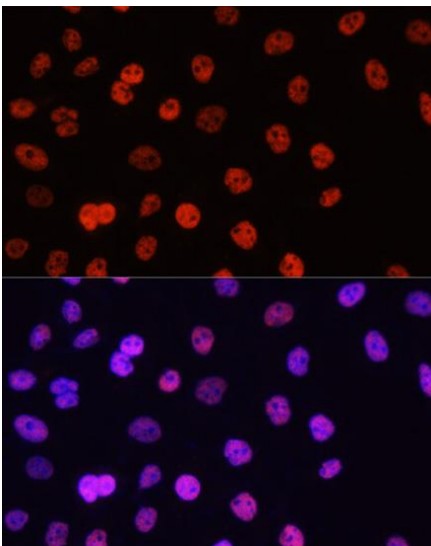
Blocking buffer: 3% nonfat dry milk in TBST



Dot-blot analysis of all sorts of methylation peptides using Histone H3R17 Dimethyl Asymmetric (H3R17me2a) Polyclonal Antibody.



Immunofluorescence analysis of 293T cells using Histone H3R17 Dimethyl Asymmetric (H3R17me2a) Polyclonal Antibody. Blue: DAPI for nuclear staining.



Immunofluorescence analysis of HeLa cells using Histone H3R17 Dimethyl Asymmetric (H3R17me2a) Polyclonal Antibody at dilution of 1:100. Blue: DAPI for nuclear staining.