

## Histone H4R3 Dimethyl Asymmetric (H4R3me2a) Polyclonal Antibody

(Catalog # A-3708)

### Description

Histone H4R3 Dimethyl Asymmetric (H4R3me2a) Polyclonal Antibody. Unconjugated. Raised in: Rabbit.

### Formulation

PBS with 0.02% sodium azide, 50% glycerol, pH7.3.

### Specificity

Human, Mouse, Rat, Broad Range

### Isotype

IgG

### Uniprot ID

P62805

### Purification

Affinity Purified

### Immunogen

A synthetic asymmetric dimethylated peptide around R3 of human histone H4 (NP\_003539.1)

### Storage

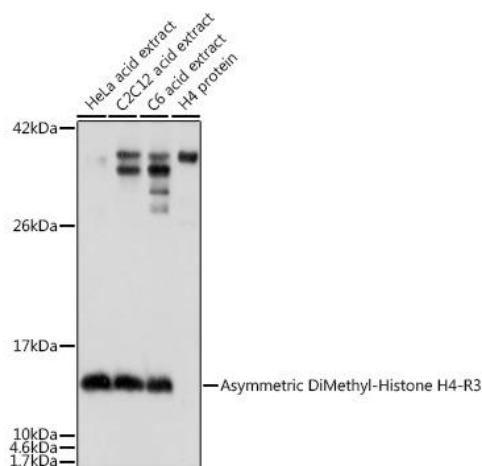
Shipped at 4°C. Upon receipt, store at -20°C. Avoid repeated freeze.

### Alternative Names

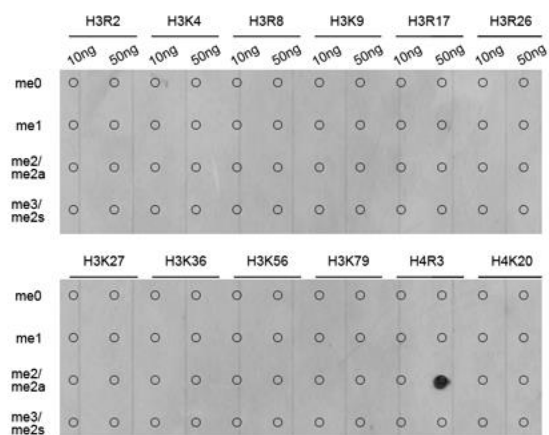
H4R3me2a, H3t, H3.4, H3/g, H3FT, H4 Arginine 3 me2a

### Application

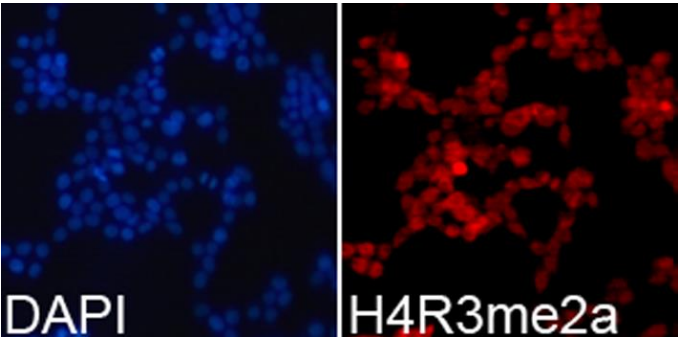
WB, IF/ICC, ELISA; Recommended dilution: WB 1:500 - 1:2000, IF/ICC 1:50 - 1:200, ELISA - recommended starting concentration is 1 µg/mL. Please optimize the concentration based on your specific assay requirements.



Western blot analysis of various lysates using H4R3me2a Polyclonal Antibody at dilution.  
Secondary antibody: HRP-conjugated Goat anti-Rabbit IgG (H+L) at 1:10000 dilution.  
Lysates/proteins: 25µg per lane.  
Blocking buffer: 3% nonfat dry milk in TBST.  
Exposure time: 5s.



Dot-blot analysis of all sorts of methylation peptides using H4R3me2a Polyclonal Antibody.



Immunofluorescence analysis of 293T cells using H4R3me2a Polyclonal Antibody. Blue: DAPI for nuclear staining.