

SMYD5 Polyclonal Antibody

(Catalog # A-2736)

Background

SMYD5 (SMYD Family Member 5) is a protein-coding gene. Diseases connected with this gene include Potocki-Lupski syndrome, which is a condition that results from having an extra copy of a small piece of chromosome 17 in each cell. Among SMYD5's related pathways are PKMTs methylate histone lysines. Gene ontology annotations related to this gene include methyltransferase activity. SMYD4 is an important paralog of this gene.

Description

SMYD5 Polyclonal Antibody. Unconjugated. Raised in: Rabbit.

Formulation

Buffer: PBS with 0.02% sodium azide, 50% glycerol, pH7.3.

Specificity

Human, Mouse

Isotype

IgG

Uniprot ID

Q6GMV2

Purification

Affinity Purification

Immunogen

Recombinant protein of human SMYD5

Storage

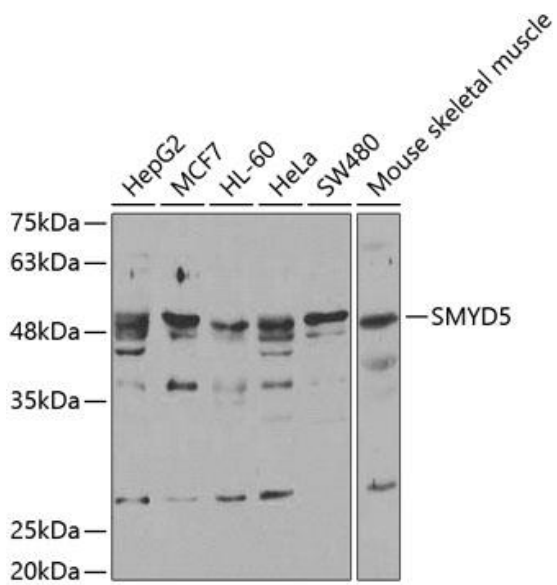
Shipped at 4°C. Upon receipt, store at -20°C. Avoid freeze / thaw cycles

Alternative Names

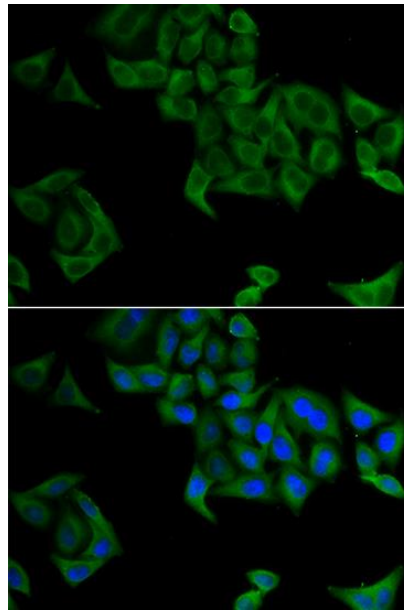
RRG1, RAI15, NN8-4AG, ZMYND23

Application

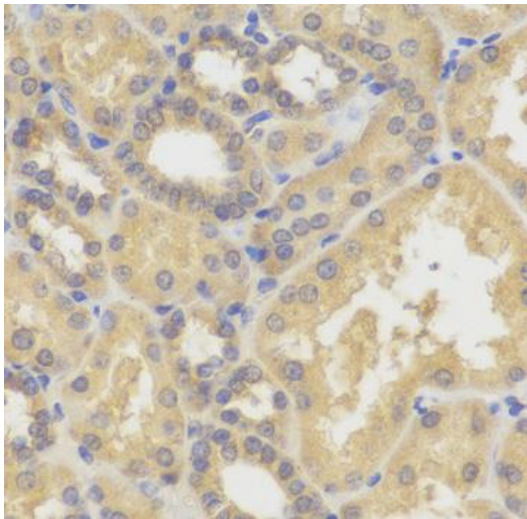
WB, IHC, IF; Recommended dilution: WB: 1:500-1:2000, IHC: 1:50-1:100, IF:1:50-1:100



Western blot analysis of extracts of various cell lines, using SMYD5 antibody.
 Secondary antibody: HRP Goat Anti-Rabbit IgG (H+L) at 1:10000 dilution.
 Lysates/proteins: 25ug per lane.
 Blocking buffer: 3% nonfat dry milk in TBST.



Immunofluorescence analysis of A549 cells using SMYD5 antibody. Blue: DAPI for nuclear staining.



Immunohistochemistry of paraffin-embedded human kidney using SMYD5 antibody.