

B-tubulin Monoclonal Antibody [A1-A4]

(Catalog # A-0801)

Background

Tubulin is one of several members of a small family of globular proteins. The most common members of the tubulin family are α -tubulin and β -tubulin. The beta-tubulin (relative molecular weight about 50 kDa) is counterpart of alpha-tubulin in tubulin heterodimer, it is coded by multiple tubulin genes and it is also posttranslationally modified. Heterogeneity of subunit is concentrated in C-terminal structural domain. Beta-Tubulin may have bound GTP or GDP. Under certain conditions B-tubulin can hydrolyze its bound GTP to GDP plus Pi, release the Pi, and exchange the GDP for GTP.

Description

B-tubulin Monoclonal Antibody. Unconjugated. Raised in: Mouse. Clone A1-A4.

Specificity

Human, Mouse, Rat

Isotype

IgG3

Purification

ProA affinity purified

Uniprot ID

Q9D6F9, P07437, P69897

Immunogen

Synthetic peptide (KLH-coupled)

Formulation

Liquid. 1*TBS (pH7.4), 0.5% BSA, 40% Glycerol. Preservative: 0.05% Sodium Azide.

Storage

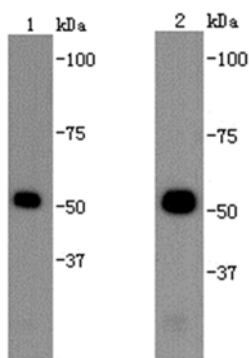
Store at 4°C after thawing. Aliquot store at -20°C for long term.

Alternative Names

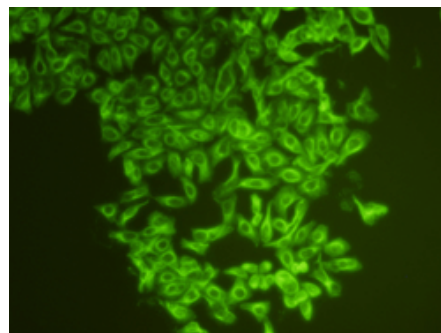
β tubulin, Tubulin beta-5 chain, beta 5-tubulin, beta 1b tubulin, beta-4 tubulin, tubulin beta polypeptide, tubulin beta-1 chain, tubulin, beta, tubulin, beta polypeptide, Anti B-tubulin

Application

WB, ICC; Recommended dilution: WB: 1:5,000-1:10,000; ICC: 1:200-1:500



Western blot analysis on 1: NIH/3T3 2: Hela lysates using B-tubulin Monoclonal Antibody [A1-A4].



Immunofluorescent staining on SKOV-3 cells using B-tubulin Monoclonal Antibody [A1-A4].