

Cyclophilin A Polyclonal Antibody

(Catalog No. A-0643)

Background

Cyclophilin A, also known as peptidylprolyl isomerase A (PPIA), is gene that encodes a member of the peptidyl-prolyl cis-trans isomerase (PPIase) family. PPIases catalyze the cis-trans isomerization of proline imidic peptide bonds in oligopeptides and accelerate the folding of proteins. The encoded protein is a cyclosporin binding-protein and is thought to play a role in cyclosporin A-mediated immunosuppression. It has also been shown to interact with numerous HIV proteins, including p55 gag, Vpr, and capsid protein, and may be required for the formation of infectious HIV virions. Various pseudogenes that map to different chromosomes have been reported.

Description

Rabbit polyclonal antibody to Cyclophilin A

Formulation

Liquid. Neat serum.

Immunogen

Recombinant human cyclophilin A conjugated to KLH.

Specificity

Human, Mouse, Rat

Purification

Serum

UniProt ID

P62937

Storage

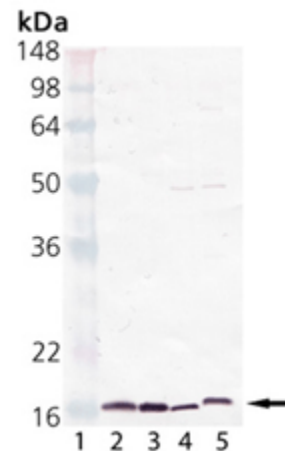
Store at -20°C. Avoid multiple freeze/thaw cycles.

Alternative Names

CyPA, Peptidyl-prolyl cis-trans isomerase A

Application

ICC, WB



▲ Western Blot analysis of Cyclophilin A Polyclonal Antibody. Lane 1: M.W. Marker, Lane 2: Cyclophilin A (recombinant), Lane 3: Jurkat Cell Lysate, Lane 4: Rat Brain Extract, Lane 5: Mouse Brain Extract

Ordering Information

Products

Cyclophilin A Polyclonal Antibody

Size

100 µl

Cat. No.

A-0643-100

This product is for research purposes only. Not intended for use in diagnostic procedures.